

# Daily Market Report

by Monte Safieddine

Monday, January 5, 2026

[GUIDE](#)

[DISCLAIMER](#)

[US 500](#)

[UK 100](#)

[GOLD](#)

[NVIDIA](#)

[EUR/USD](#)

[USD/CAD](#)

[US TECH 100](#)

[ASX 200](#)

[SILVER](#)

[TESLA](#)

[GBP/USD](#)

[USD/CHF](#)

[WALL STREET](#)

[HONG KONG](#)

[CRUDE OIL](#)

[AMAZON](#)

[EUR/GBP](#)

[GBP/JPY](#)

[US RUSSELL](#)

[JAPAN 225](#)

[NAT GAS](#)

[APPLE](#)

[USD/JPY](#)

[BITCOIN](#)

[GERMANY 40](#)

[MICROSOFT](#)

[AUD/USD](#)

[ETHER](#)

CFDs trading carries risk. Capital.com is regulated by the Securities and Commodities Authority.

capital.com

# US 500

MA – Short	MA - Long	DMI	ADX	RSI	Bollinger Bands
Bearish	Bullish	Neutral	Consolidation	Neutral	Neutral

DAILY:

WEEKLY:

## Technical Overview

### Consolidation - Positive Bias

Technical Overview  
Conformist Strategies

Technical Overview  
Contrarian Strategies

Stop Loss for 2nd  
Resistance

2nd Resistance

Stop Loss for 1st  
Resistance

1st Resistance

Relative Starting  
Point

1st Support

Stop Loss for 1st  
Support

2nd Support

Stop Loss for 2nd  
Support

Sell 1st Resistance only  
after a significant reversal;  
Buy 1st Support at/before  
its price

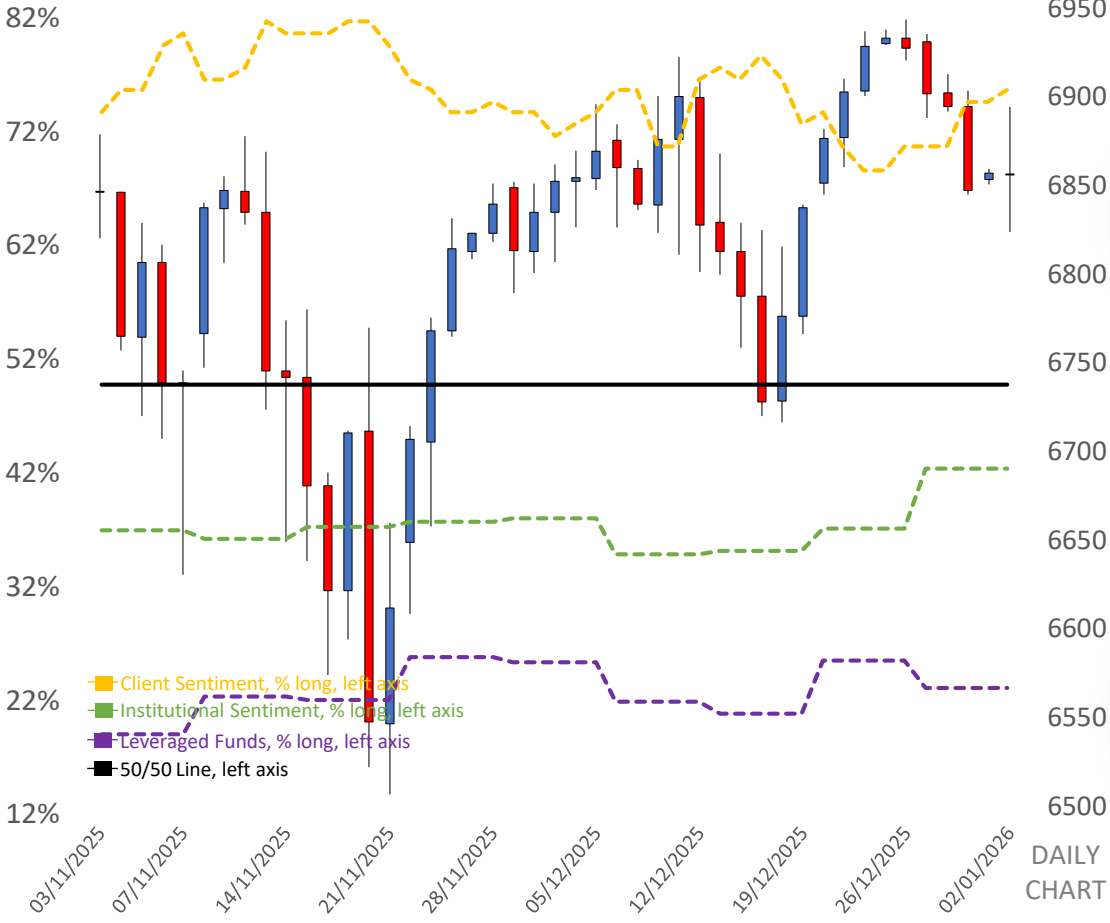
Buy 1st Resistance upon  
breakout from below; Sell  
1st Support upon breakout  
from above

### Bull Average

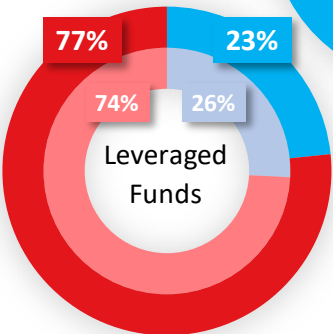
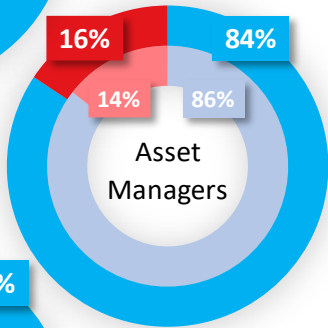
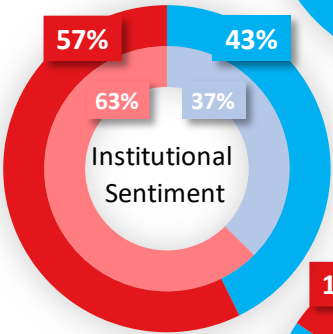
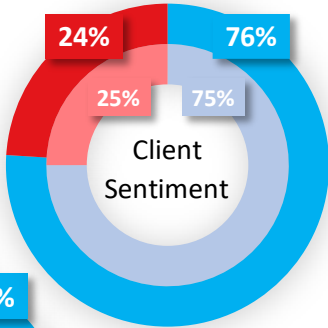
Buy 1st Support only after a  
significant reversal; Buy 1st  
Resistance upon breakout  
from below

Sell 1st Resistance level  
only after a reversal; Sell 1st  
Support upon breakout from  
above

6943.69	7089.55
6926.35	7043.04
6909.01	6996.53
6891.67	6950.02
6857.00	6857.00
6822.33	6763.98
6804.99	6717.47
6787.65	6670.96
6770.31	6624.45



% Traders Long  
% Traders Short



# US TECH 100

MA – Short	MA - Long	DMI	ADX	RSI	Bollinger Bands
Bearish	Neutral	Neutral	Consolidation	Neutral	Neutral

DAILY:

**Cautious Consolidation**

Sell 1st Resistance only after a significant reversal;  
Buy 1st Support only after a significant Reversal

Buy 1st Resistance upon breakout from below; Sell 1st Support upon breakout from above

WEEKLY:

**Bull Average**

Buy 1st Support only after a significant reversal; Buy 1st Resistance upon breakout from below

Sell 1st Resistance level only after a reversal; Sell 1st Support upon breakout from above

Technical Overview

Technical Overview  
Conformist Strategies

Technical Overview  
Contrarian Strategies

Stop Loss for 2nd Resistance

2nd Resistance

Stop Loss for 1st Resistance

1st Resistance

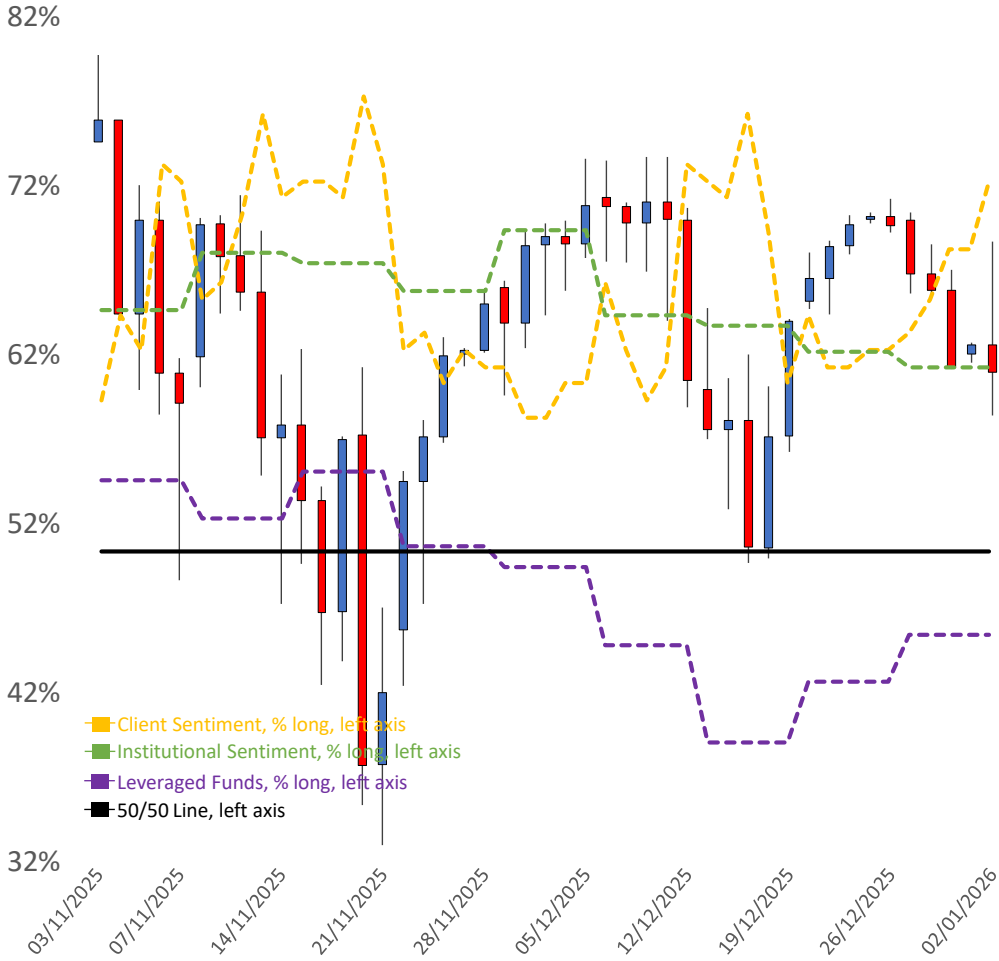
Relative Starting Point

1st Support

Stop Loss for 1st Support

2nd Support

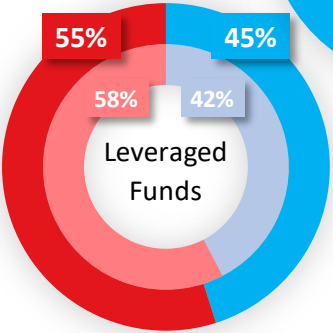
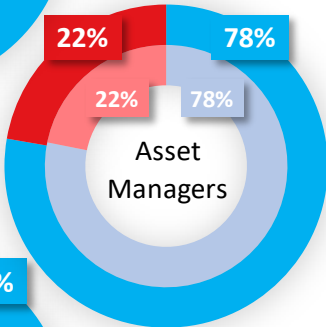
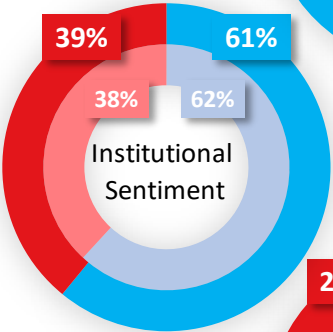
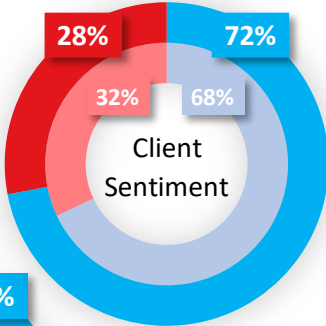
Stop Loss for 2nd Support



— Client Sentiment, % long, left axis  
— Institutional Sentiment, % long, left axis  
— Leveraged Funds, % long, left axis  
— 50/50 Line, left axis

25820  
25320  
24820  
24320  
23820  
DAILY CHART

■ % Traders Long  
■ % Traders Short



# US WALL STREET 30

MA – Short	MA - Long	DMI	ADX	RSI	Bollinger Bands
Neutral	Bullish	Neutral	Trending	Neutral	Neutral

DAILY:

WEEKLY:

Technical Overview

Technical Overview  
Conformist Strategies

Technical Overview  
Contrarian Strategies

Stop Loss for 2nd  
Resistance

2nd Resistance

Stop Loss for 1st  
Resistance

1st Resistance

Relative Starting  
Point

1st Support

Stop Loss for 1st  
Support

2nd Support

Stop Loss for 2nd  
Support

**Consolidation -  
Positive Bias**

Sell 1st Resistance only  
after a significant reversal;  
Buy 1st Support at/before  
its price

Buy 1st Resistance upon  
breakout from below; Sell  
1st Support upon breakout  
from above

**Bull Average**

Buy 1st Support only after a  
significant reversal; Buy 1st  
Resistance upon breakout  
from below

Sell 1st Resistance level  
only after a reversal; Sell 1st  
Support upon breakout from  
above

79%

69%

59%

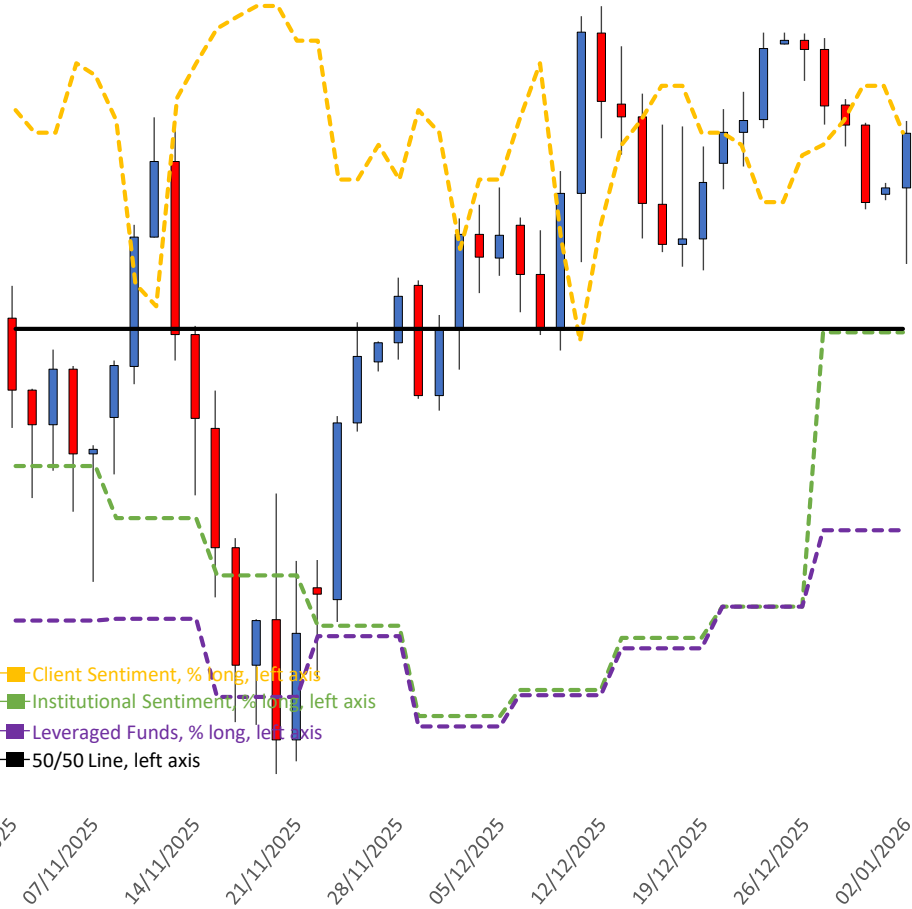
49%

39%

29%

19%

9%



48600

48100

47600

47100

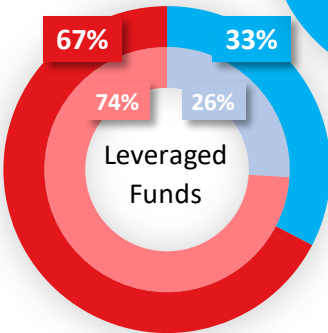
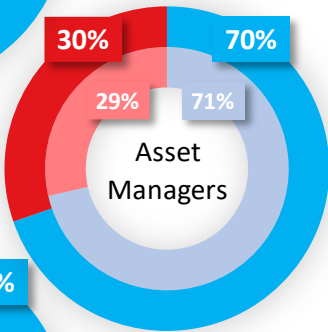
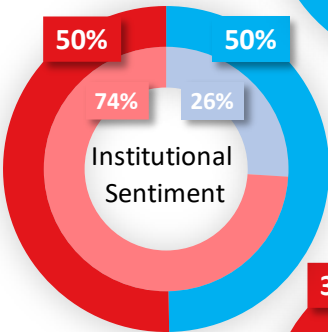
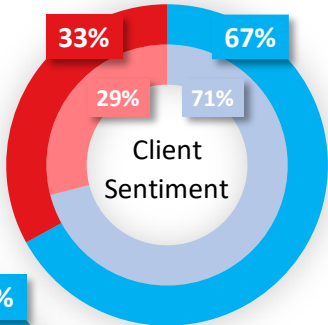
46600

46100

45600

DAILY  
CHART

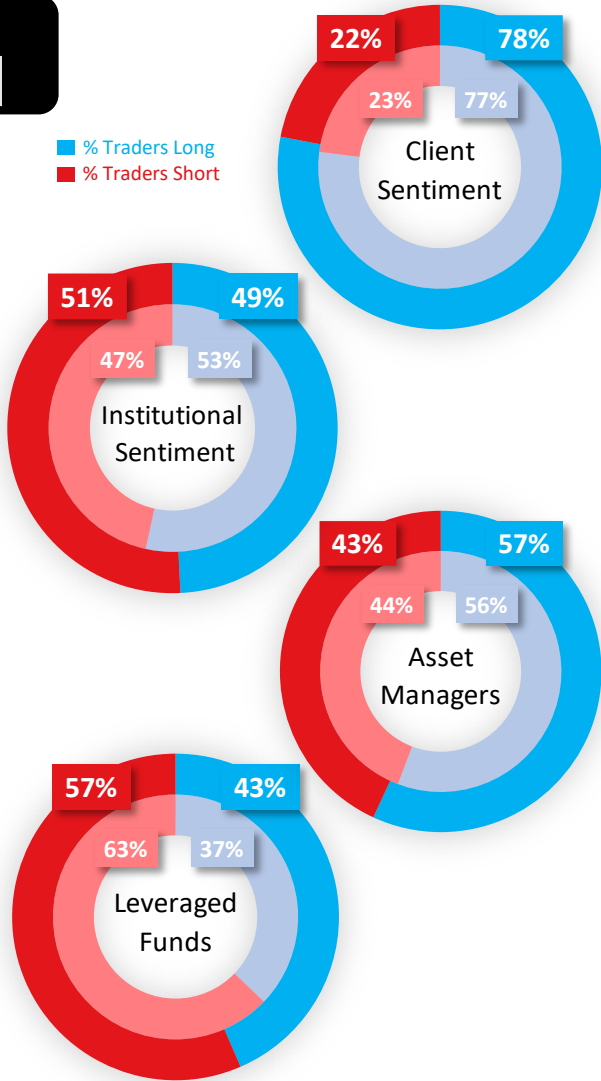
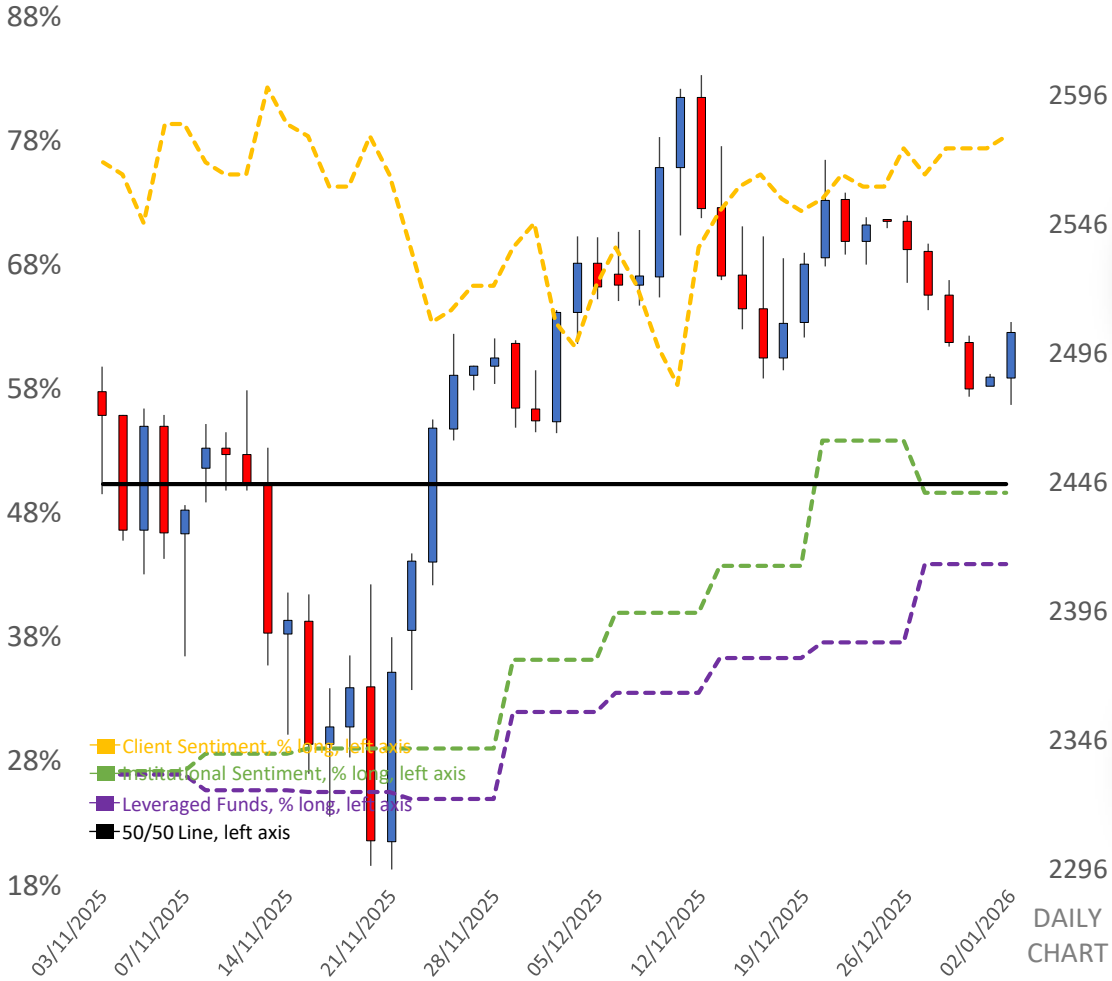
■ % Traders Long  
■ % Traders Short



# US RUSSELL 2000

MA – Short	MA - Long	DMI	ADX	RSI	Bollinger Bands
Neutral	Bullish	Neutral	Trending	Neutral	Neutral

	DAILY:	WEEKLY:
Technical Overview	<b>Cautious Consolidation</b>	<b>Bull Average</b>
Technical Overview Conformist Strategies	Sell 1st Resistance only after a significant reversal; Buy 1st Support only after a significant Reversal	Buy 1st Support only after a significant reversal; Buy 1st Resistance upon breakout from below
Technical Overview Contrarian Strategies	Buy 1st Resistance upon breakout from below; Sell 1st Support upon breakout from above	Sell 1st Resistance level only after a reversal; Sell 1st Support upon breakout from above
Stop Loss for 2nd Resistance	2555.3	2647.8
2nd Resistance	2545.1	2619.1
Stop Loss for 1st Resistance	2534.9	2590.4
1st Resistance	2524.6	2561.6
Relative Starting Point	2504.2	2504.2
1st Support	2483.8	2446.8
Stop Loss for 1st Support	2473.5	2418.0
2nd Support	2463.3	2389.3
Stop Loss for 2nd Support	2453.1	2360.6



# GERMANY 40

MA – Short	MA - Long	DMI	ADX	RSI	Bollinger Bands
Bullish	Bullish	Positive	Consolidation	Neutral	Upper Extreme

DAILY: WEEKLY: 87%

Technical Overview

Bull Average

Consolidation - Positive Bias

Technical Overview  
Conformist Strategies

Buy 1st Support only after a significant reversal; Buy 1st Resistance upon breakout from below

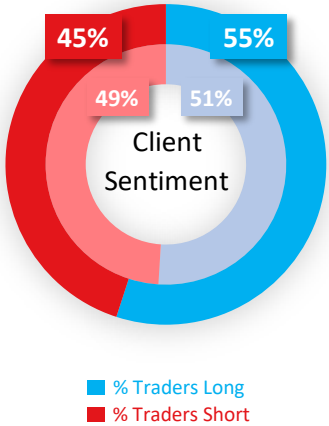
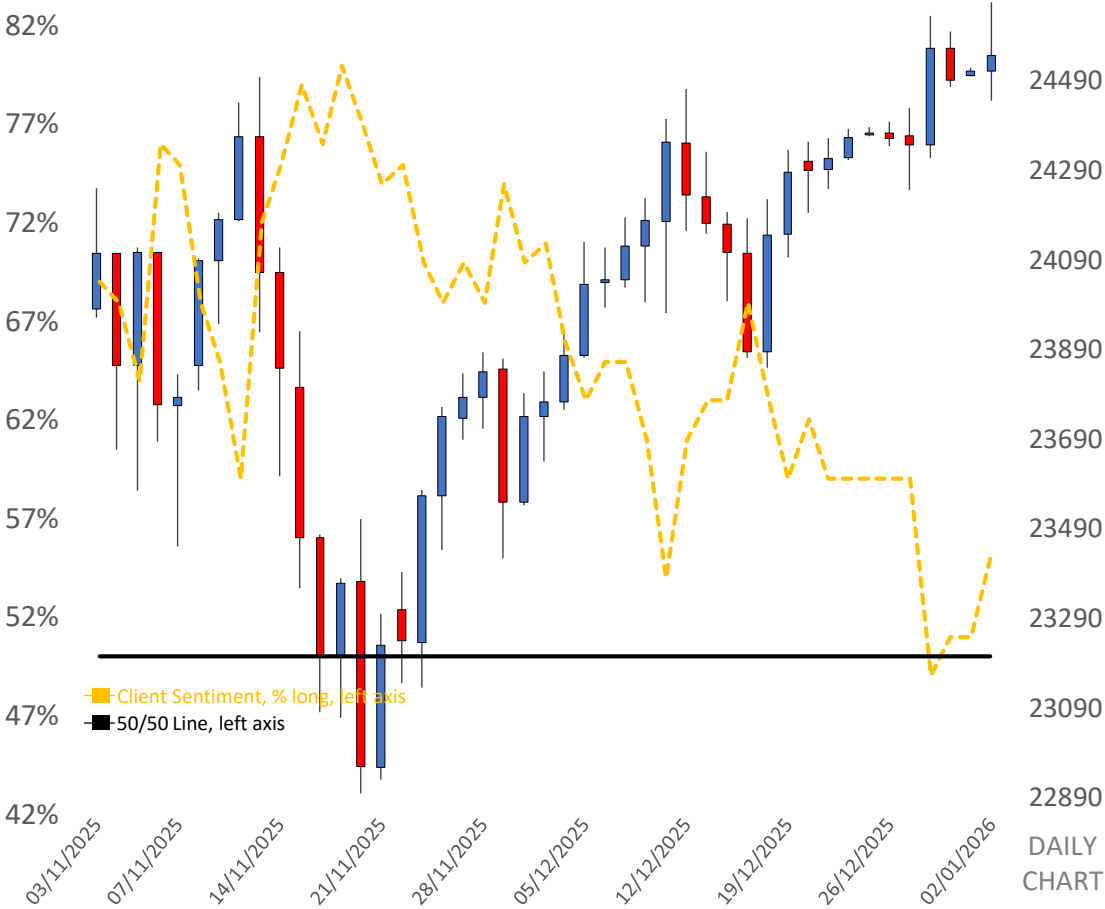
Sell 1st Resistance only after a significant reversal; Buy 1st Support at/before its price

Technical Overview  
Contrarian Strategies

Sell 1st Resistance level only after a reversal; Sell 1st Support upon breakout from above

Buy 1st Resistance upon breakout from below; Sell 1st Support upon breakout from above

Stop Loss for 2nd Resistance	24860	25538
2nd Resistance	24797	25340
Stop Loss for 1st Resistance	24735	25142
1st Resistance	24673	24944
Relative Starting Point	24548	24548
1st Support	24423	24152
Stop Loss for 1st Support	24361	23954
2nd Support	24299	23756
Stop Loss for 2nd Support	24237	23558



# UK 100

MA – Short	MA - Long	DMI	ADX	RSI	Bollinger Bands
Bullish	Bullish	Positive	Trending	Overbought	Upper Extreme

DAILY:

WEEKLY:

Technical Overview

Bull Average

Bull Average

Technical Overview  
Conformist Strategies

Buy 1st Support only after a significant reversal; Buy 1st Resistance upon breakout from below

Buy 1st Support only after a significant reversal; Buy 1st Resistance upon breakout from below

Technical Overview  
Contrarian Strategies

Sell 1st Resistance level only after a reversal; Sell 1st Support upon breakout from above

Sell 1st Resistance level only after a reversal; Sell 1st Support upon breakout from above

Stop Loss for 2nd Resistance

10098.5

10259.5

2nd Resistance

10077.9

10206.7

Stop Loss for 1st Resistance

10057.2

10153.8

1st Resistance

10036.6

10101.0

Relative Starting Point

9995.4

9995.4

1st Support

9954.2

9889.8

Stop Loss for 1st Support

9933.6

9837.0

2nd Support

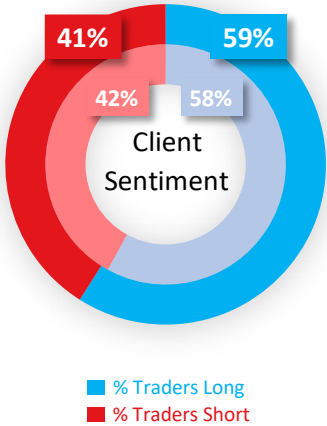
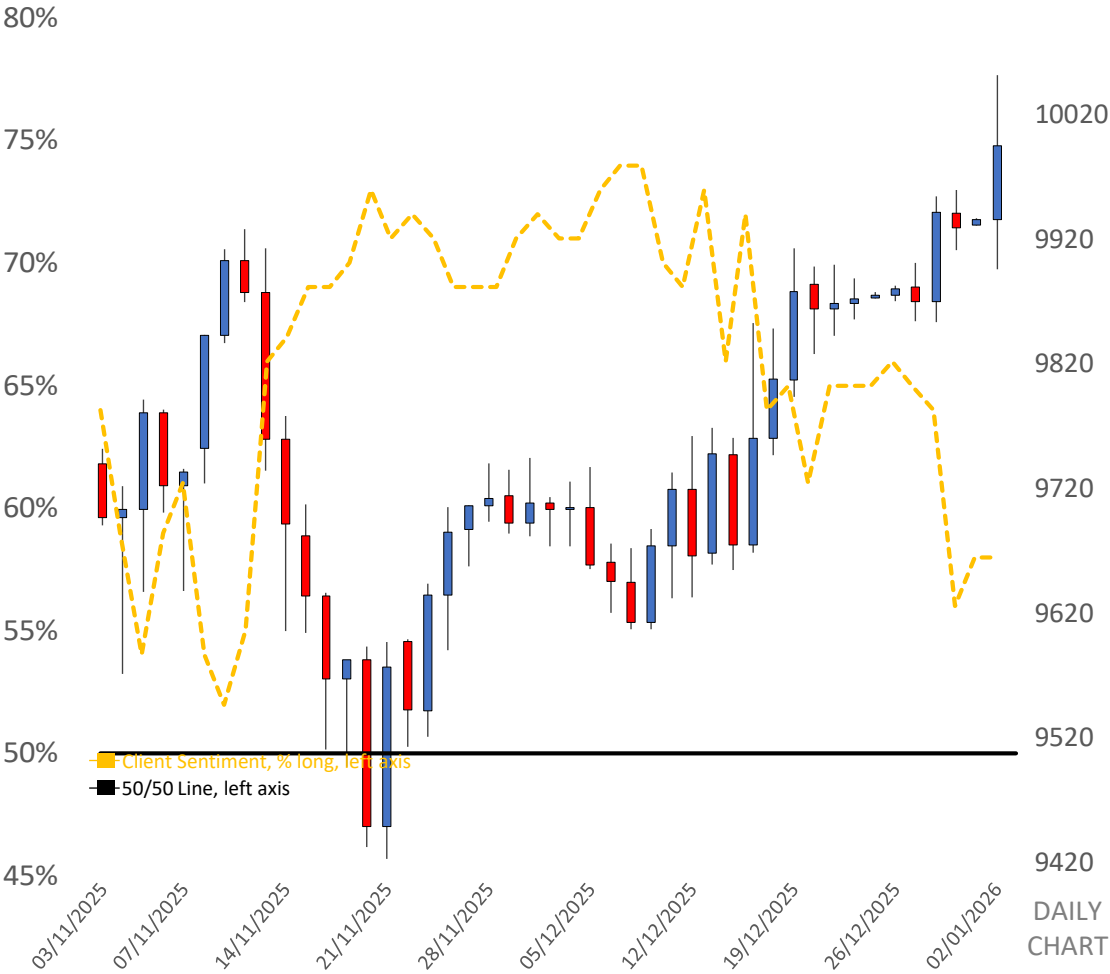
9912.9

9784.1

Stop Loss for 2nd Support

9892.3

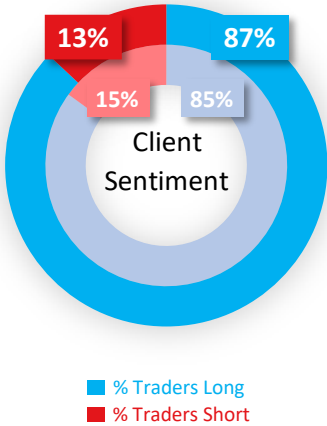
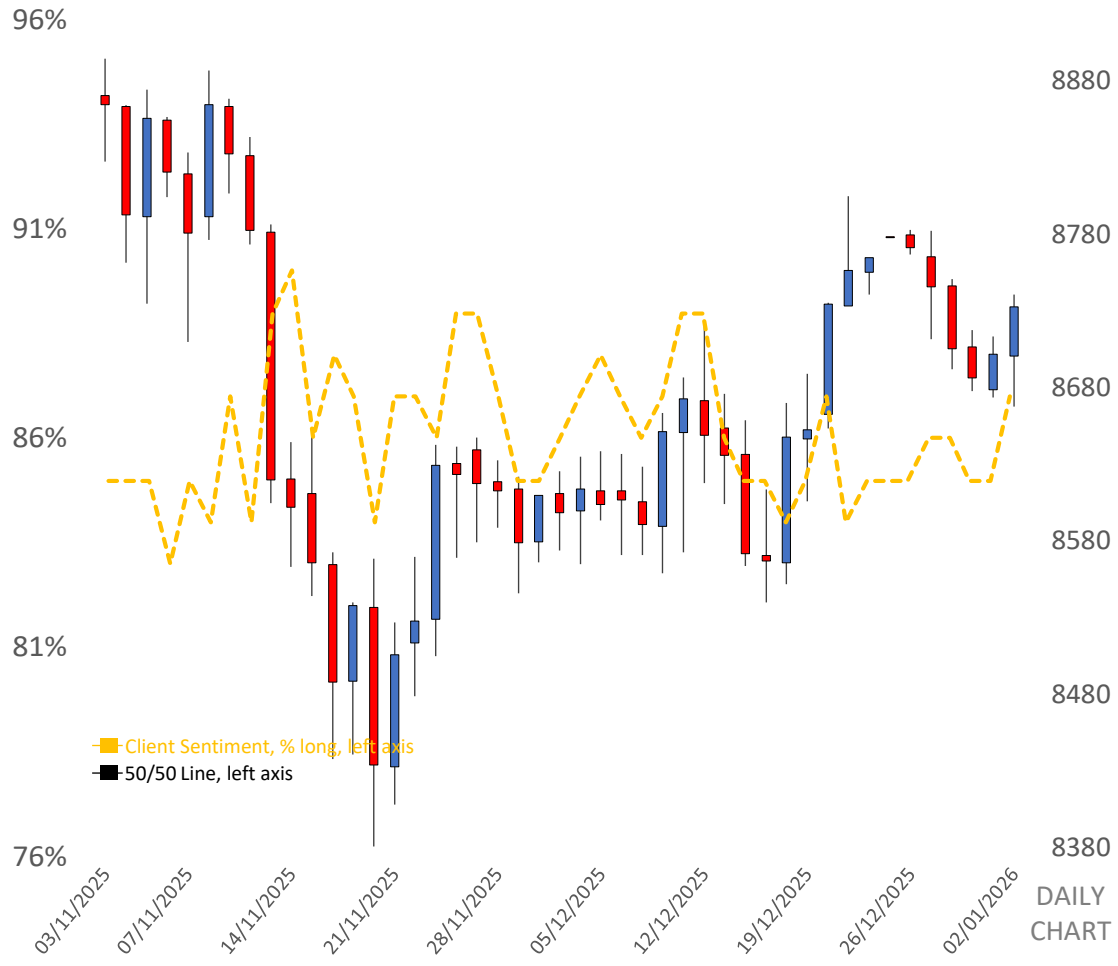
9731.3



# AUSTRALIA 200

MA – Short	MA - Long	DMI	ADX	RSI	Bollinger Bands
Neutral	Neutral	Neutral	Consolidation	Neutral	Neutral

	DAILY:	WEEKLY:
Technical Overview	<b>Cautious Consolidation</b>	<b>Cautious Consolidation</b>
Technical Overview Conformist Strategies	Sell 1st Resistance only after a significant reversal; Buy 1st Support only after a significant Reversal	Sell 1st Resistance only after a significant reversal; Buy 1st Support only after a significant Reversal
Technical Overview Contrarian Strategies	Buy 1st Resistance upon breakout from below; Sell 1st Support upon breakout from above	Buy 1st Resistance upon breakout from below; Sell 1st Support upon breakout from above
Stop Loss for 2nd Resistance	8834.9	8995.6
2nd Resistance	8814.5	8943.1
Stop Loss for 1st Resistance	8794.1	8890.5
1st Resistance	8773.8	8838.0
Relative Starting Point	8733.0	8733.0
1st Support	8692.2	8628.0
Stop Loss for 1st Support	8671.9	8575.5
2nd Support	8651.5	8522.9
Stop Loss for 2nd Support	8631.1	8470.4

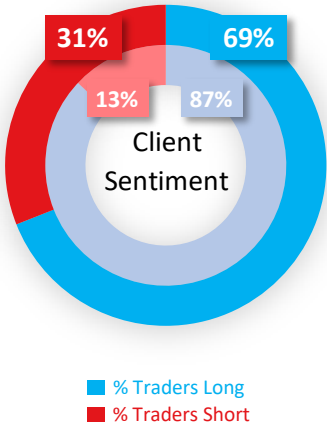
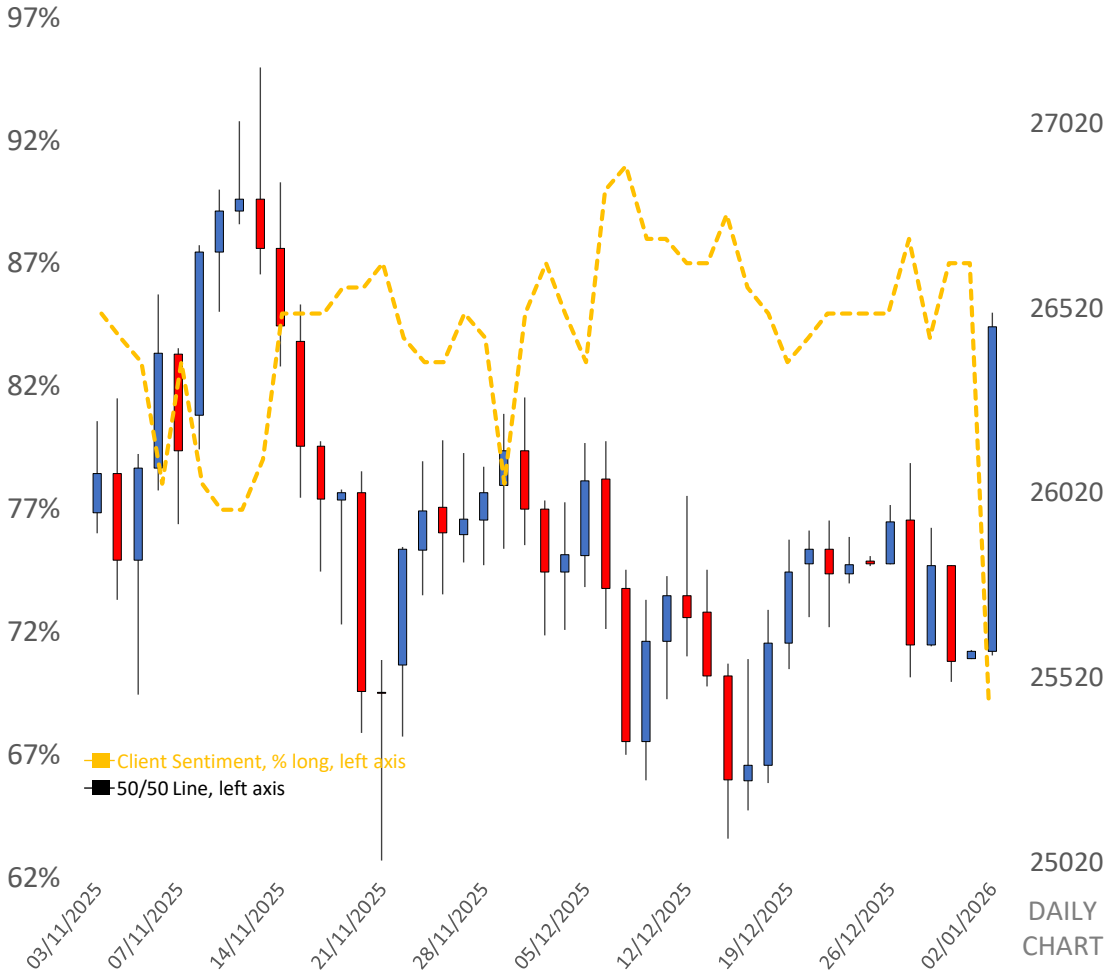




# HONG KONG 50

MA – Short	MA - Long	DMI	ADX	RSI	Bollinger Bands
Bullish	Bullish	Positive	Consolidation	Neutral	Upper Extreme

Technical Overview	DAILY: Consolidation - Volatile	WEEKLY: Consolidation - Positive Bias
Technical Overview Conformist Strategies	Buy 1st Resistance upon breakout from below; Sell 1st Support upon breakout from above	Sell 1st Resistance only after a significant reversal; Buy 1st Support at/before its price
Technical Overview Contrarian Strategies	Sell 1st Resistance only after a reversal; Buy 1st Support only after a reversal	Buy 1st Resistance upon breakout from below; Sell 1st Support upon breakout from above
Stop Loss for 2nd Resistance	27014	27947
2nd Resistance	26906	27652
Stop Loss for 1st Resistance	26797	27356
1st Resistance	26688	27061
Relative Starting Point	26471	26471
1st Support	26254	25881
Stop Loss for 1st Support	26145	25586
2nd Support	26036	25290
Stop Loss for 2nd Support	25928	24995



# JAPAN 225

MA – Short	MA - Long	DMI	ADX	RSI	Bollinger Bands
Bullish	Bullish	Positive	Consolidation	Neutral	Upper Extreme

DAILY:

WEEKLY:

Technical Overview

**Cautious Consolidation**

Technical Overview  
Conformist Strategies

Sell 1st Resistance only after a significant reversal;  
Buy 1st Support only after a significant Reversal

Technical Overview  
Contrarian Strategies

Buy 1st Resistance upon breakout from below; Sell 1st Support upon breakout from above

Stop Loss for 2nd Resistance

52186

53814

2nd Resistance

51967

53269

Stop Loss for 1st Resistance

51748

52725

1st Resistance

51529

52180

Relative Starting Point

51091

51091

1st Support

50653

50002

Stop Loss for 1st Support

50434

49457

2nd Support

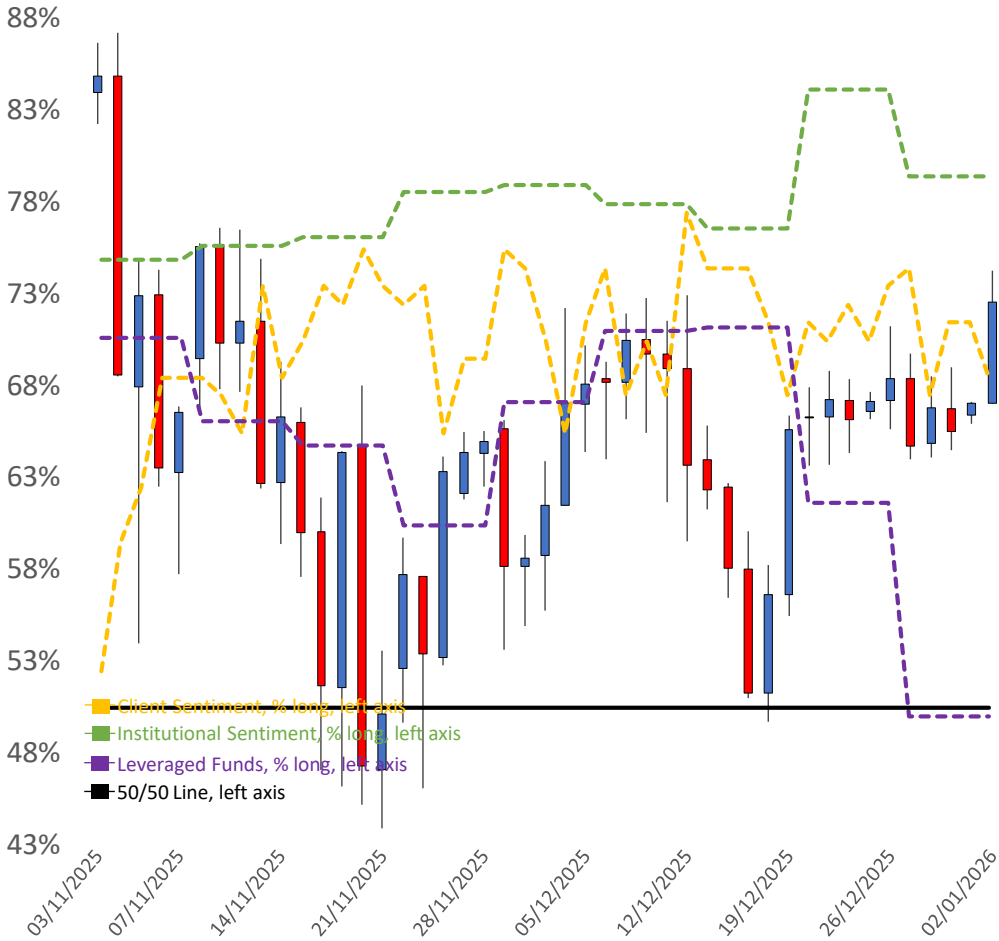
50215

48912

Stop Loss for 2nd Support

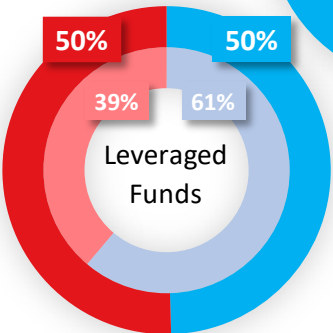
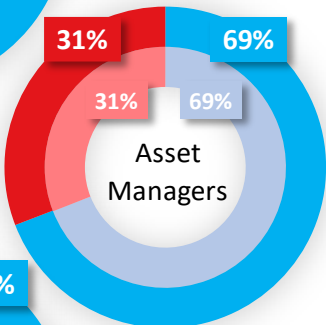
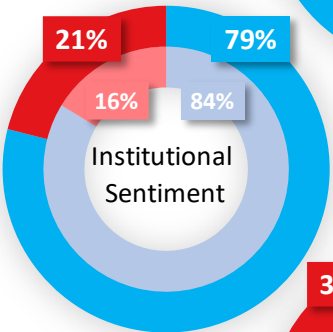
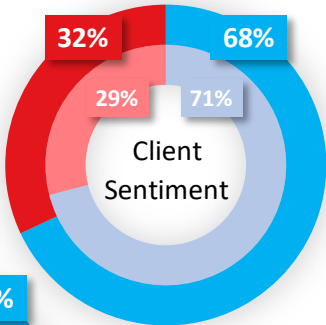
49995

48368



52500  
52000  
51500  
51000  
50500  
50000  
49500  
49000  
48500  
48000  
DAILY CHART

■ % Traders Long  
■ % Traders Short



# GOLD

MA – Short	MA - Long	DMI	ADX	RSI	Bollinger Bands
Bearish	Bullish	Neutral	Trending	Neutral	Neutral

DAILY:

WEEKLY:

Technical Overview

Volatile

Volatile

Technical Overview  
Conformist Strategies

Technical Overview  
Contrarian Strategies

Stop Loss for 2nd  
Resistance

2nd Resistance

Stop Loss for 1st  
Resistance

1st Resistance

Relative Starting  
Point

1st Support

Stop Loss for 1st  
Support

2nd Support

Stop Loss for 2nd  
Support

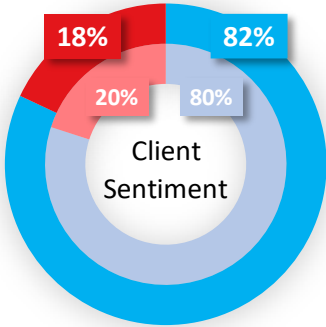
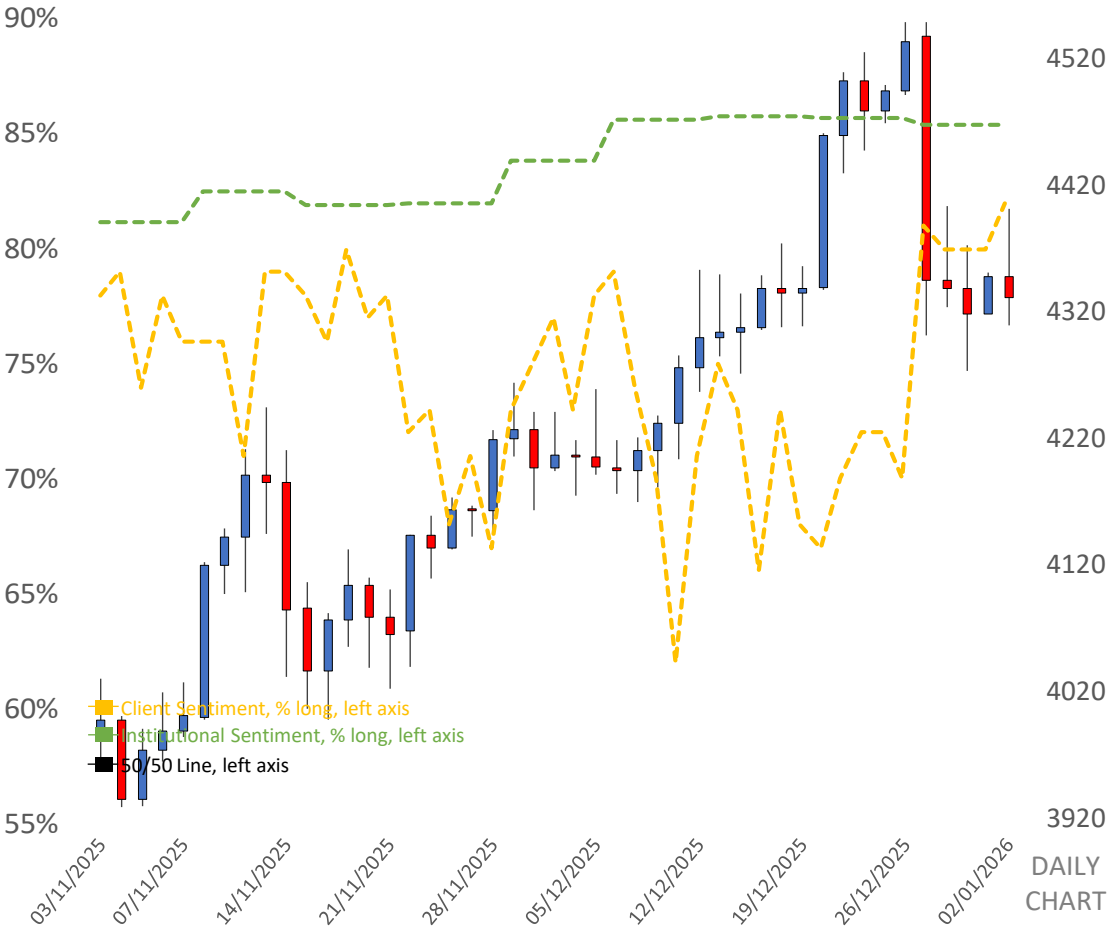
Buy 1st Resistance upon  
breakout from below; Sell  
1st Support upon breakout  
from above

Sell 1st Resistance only  
after a significant reversal;  
Buy 1st Support only after a  
significant Reversal

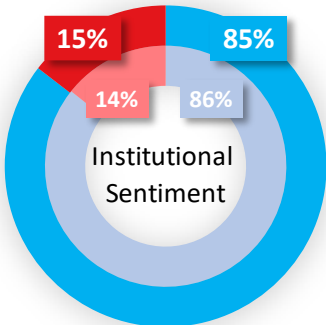
Buy 1st Resistance upon  
breakout from below; Sell  
1st Support upon breakout  
from above

Sell 1st Resistance only  
after a significant reversal;  
Buy 1st Support only after a  
significant Reversal

4435.89	4553.83
4415.12	4509.48
4394.35	4465.12
4373.59	4420.76
4332.05	4332.05
4290.51	4243.34
4269.75	4198.98
4248.98	4154.62
4228.21	4110.27



% Traders Long  
% Traders Short



# SILVER

MA – Short	MA - Long	DMI	ADX	RSI	Bollinger Bands
Neutral	Bullish	Positive	Trending	Overbought	Neutral

DAILY:

WEEKLY:

## Technical Overview

Technical Overview  
Conformist Strategies

Technical Overview  
Contrarian Strategies

Stop Loss for 2nd  
Resistance

2nd Resistance

Stop Loss for 1st  
Resistance

1st Resistance

Relative Starting  
Point

1st Support

Stop Loss for 1st  
Support

2nd Support

Stop Loss for 2nd  
Support

Volatile

Buy 1st Resistance upon  
breakout from below; Sell  
1st Support upon breakout  
from above

Sell 1st Resistance only  
after a significant reversal;  
Buy 1st Support only after a  
significant Reversal

77.29

76.39

75.49

74.59

72.78

70.98

70.08

69.18

68.28

Volatile

Buy 1st Resistance upon  
breakout from below; Sell  
1st Support upon breakout  
from above

Sell 1st Resistance only  
after a significant reversal;  
Buy 1st Support only after a  
significant Reversal

78.30

77.20

76.10

74.99

72.78

70.58

69.47

68.37

67.26

91%

86%

81%

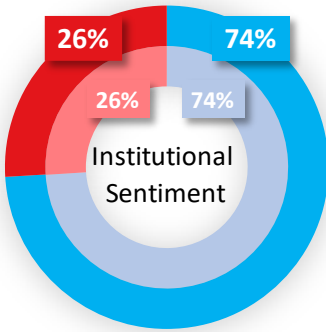
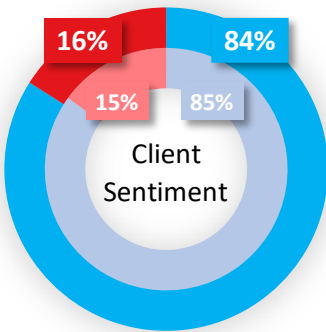
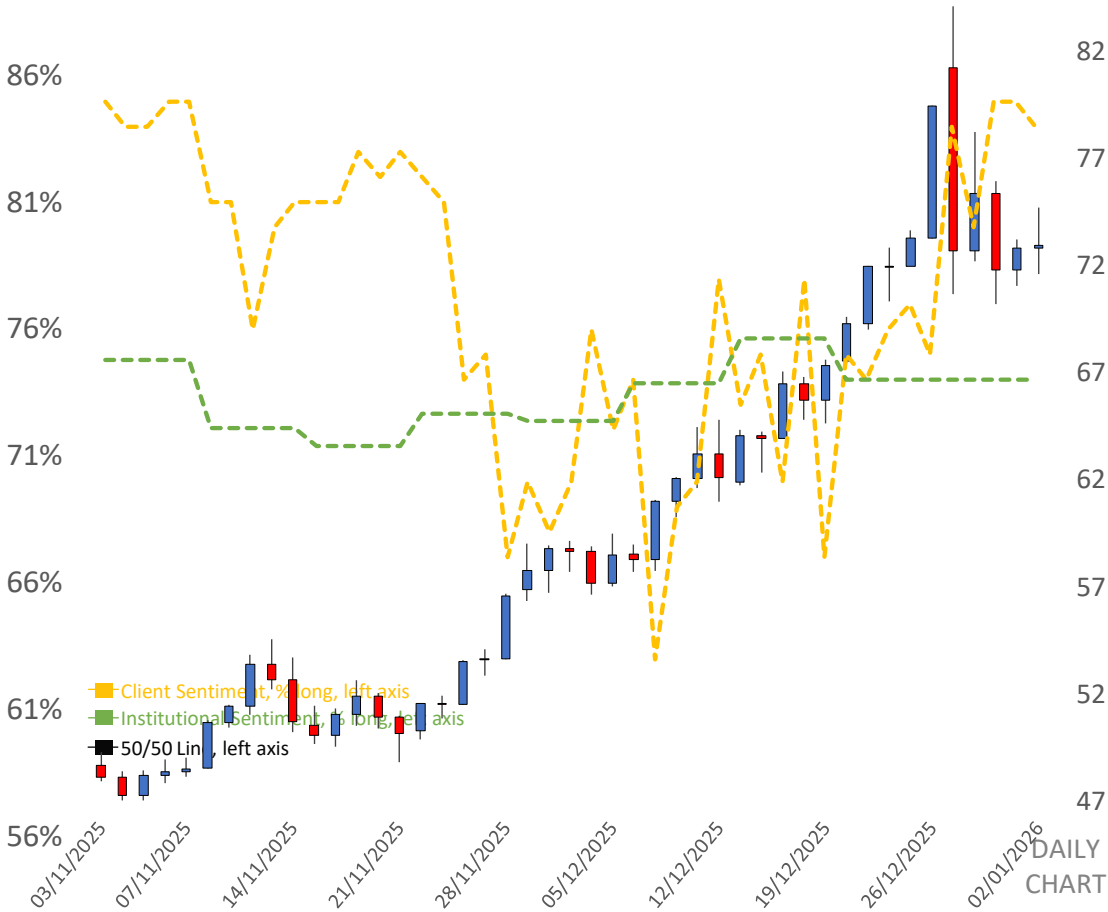
76%

71%

66%

61%

56%



# CRUDE OIL

MA – Short	MA - Long	DMI	ADX	RSI	Bollinger Bands
Bearish	Bearish	Negative	Trending	Neutral	Neutral

DAILY:

WEEKLY:

## Technical Overview

Technical Overview  
Conformist Strategies

Technical Overview  
Contrarian Strategies

Stop Loss for 2nd  
Resistance

2nd Resistance

Stop Loss for 1st  
Resistance

1st Resistance

Relative Starting  
Point

1st Support

Stop Loss for 1st  
Support

2nd Support

Stop Loss for 2nd  
Support

**Cautious  
Consolidation**

Sell 1st Resistance only  
after a significant reversal;  
Buy 1st Support only after a  
significant Reversal

Buy 1st Resistance upon  
breakout from below; Sell  
1st Support upon breakout  
from above

**59.01**

**58.65**

**58.29**

**57.94**

**57.22**

**56.51**

**56.15**

**55.80**

**55.44**

**Consolidation -  
Negative Bias**

Sell 1st Resistance  
at/before its price; Buy 1st  
Support only after a  
significant reversal

Buy 1st Resistance upon  
breakout from below; Sell  
1st Support upon breakout  
from above

**63.09**

**61.91**

**60.74**

**59.57**

**57.22**

**54.88**

**53.70**

**52.53**

**51.36**

95%

90%

85%

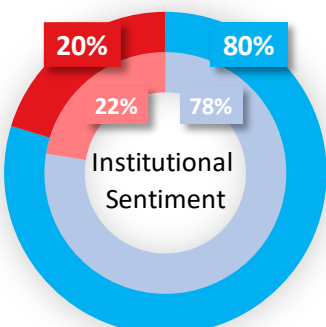
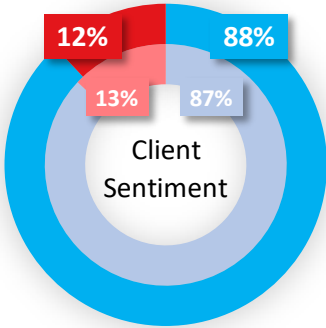
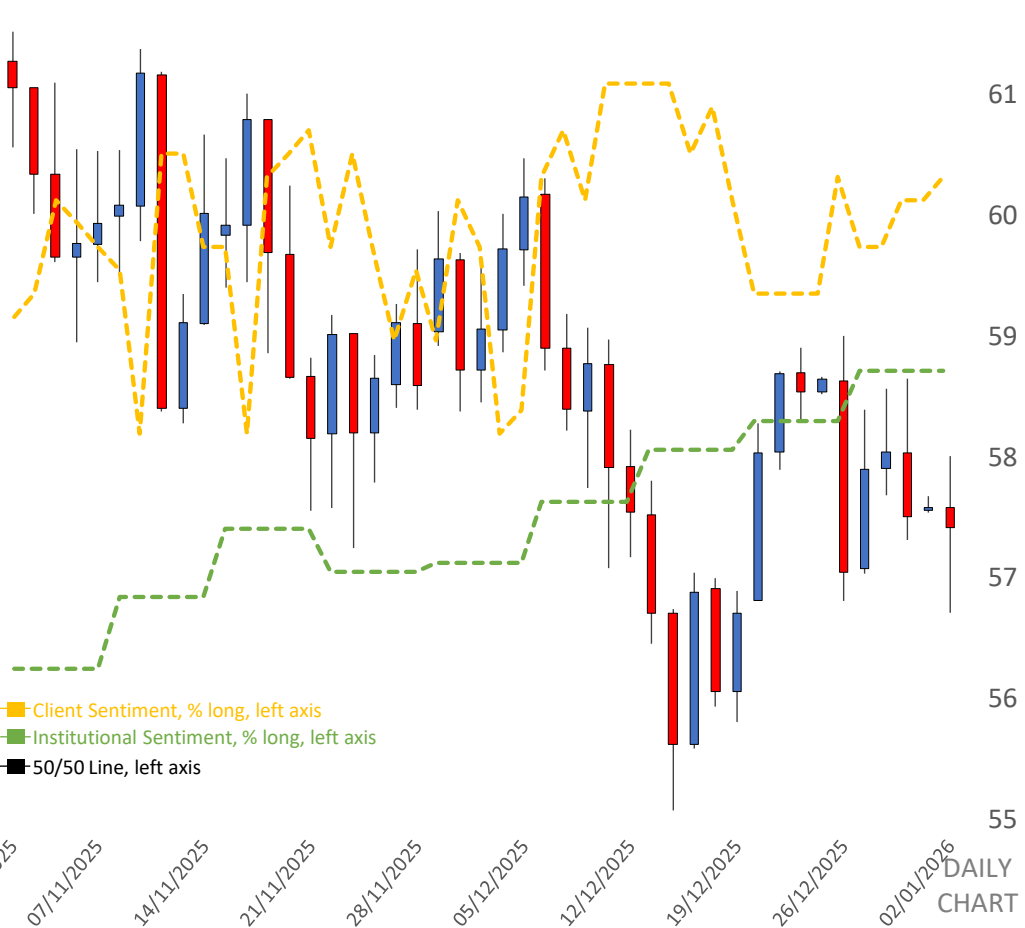
80%

75%

70%

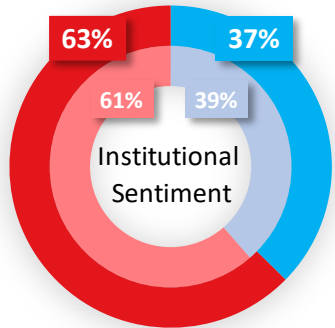
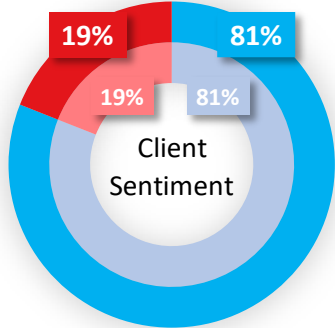
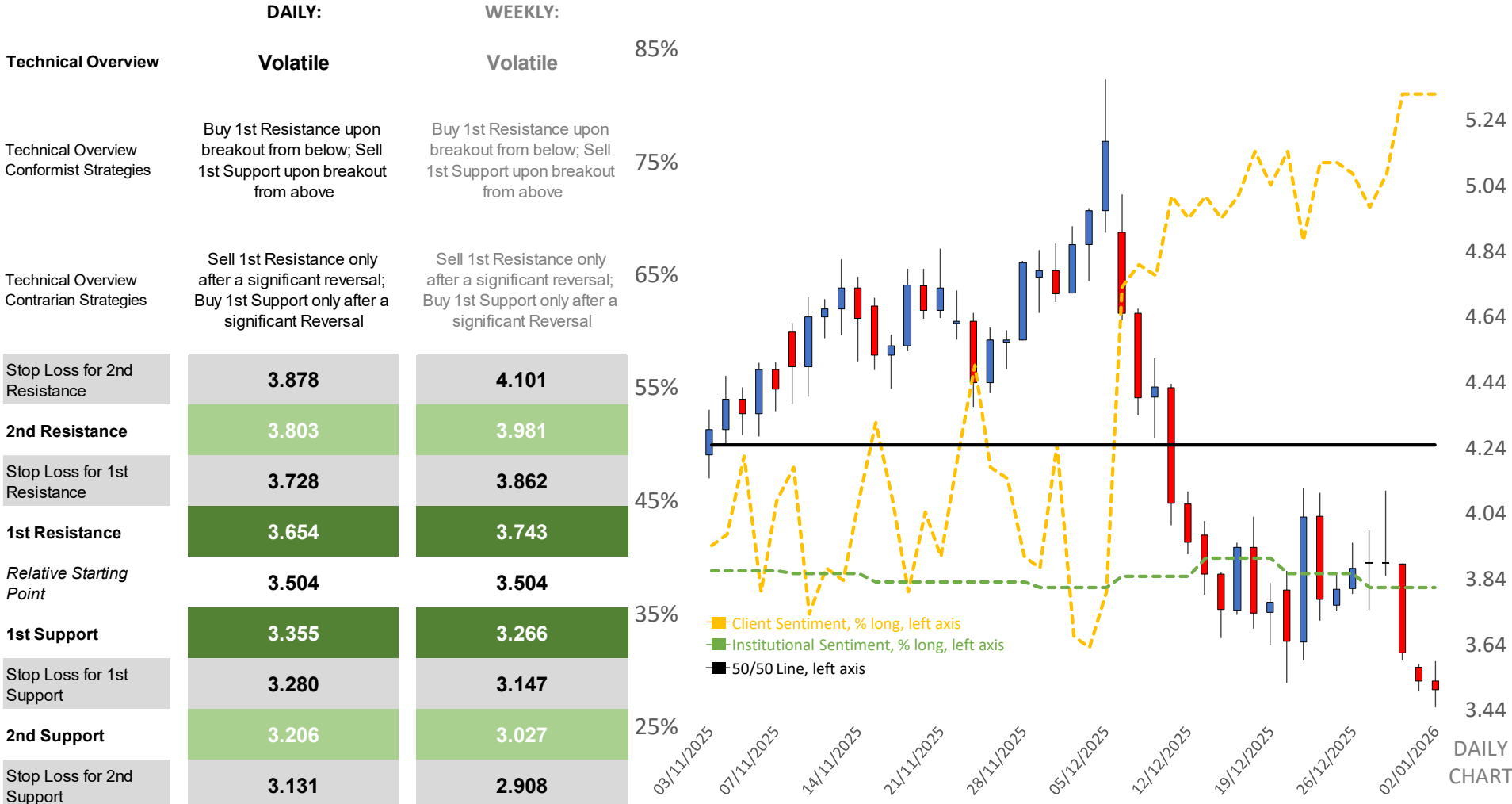
65%

60%



# NATURAL GAS

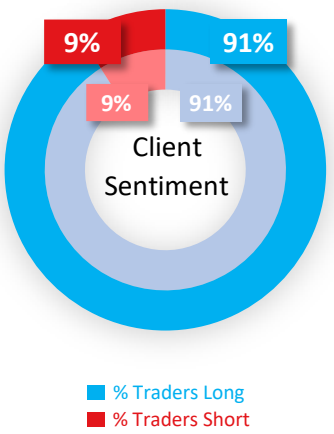
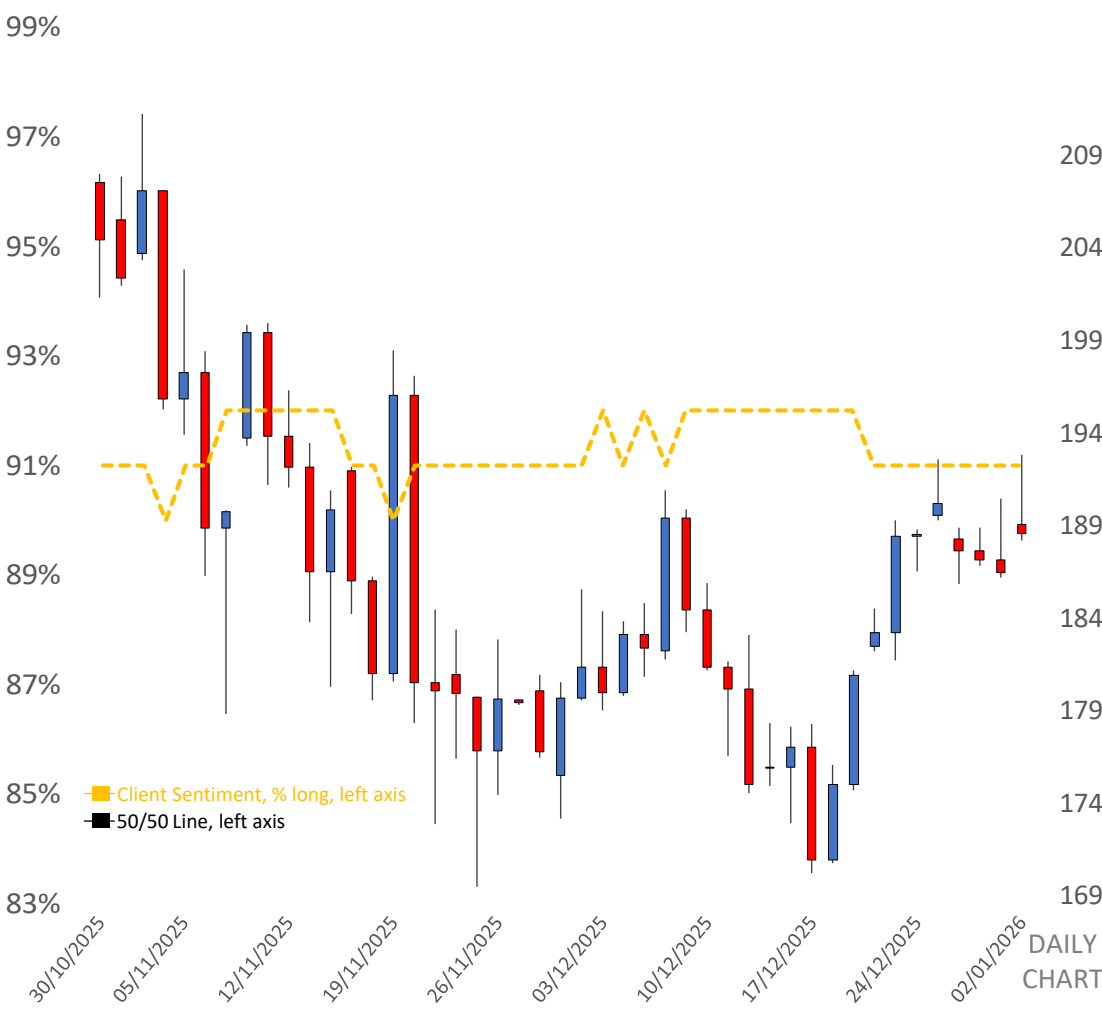
MA – Short	MA - Long	DMI	ADX	RSI	Bollinger Bands
Bearish	Bearish	Neutral	Consolidation	Neutral	Lower Extreme



# NVIDIA

MA – Short	MA - Long	DMI	ADX	RSI	Bollinger Bands
Bullish	Bullish	Neutral	Consolidation	Neutral	Neutral

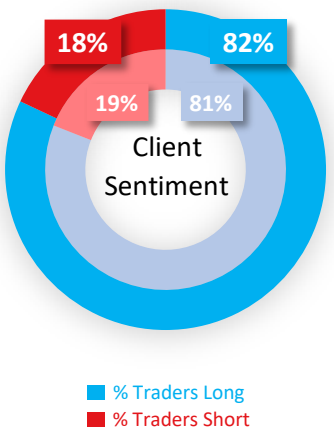
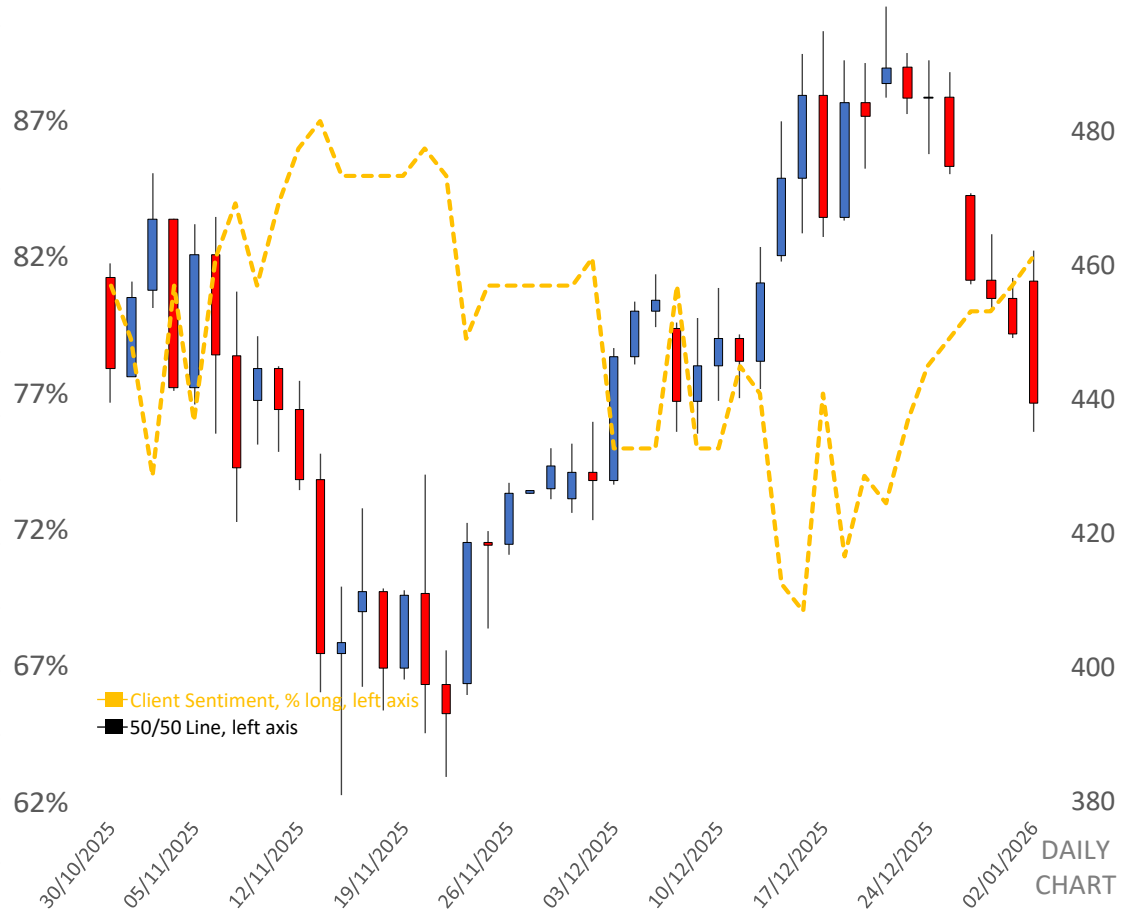
Technical Overview	DAILY: Cautious Consolidation	WEEKLY: Cautious Consolidation
Technical Overview Conformist Strategies	Sell 1st Resistance only after a significant reversal; Buy 1st Support only after a significant Reversal	Sell 1st Resistance only after a significant reversal; Buy 1st Support only after a significant Reversal
Technical Overview Contrarian Strategies	Buy 1st Resistance upon breakout from below; Sell 1st Support upon breakout from above	Buy 1st Resistance upon breakout from below; Sell 1st Support upon breakout from above
Stop Loss for 2nd Resistance	197.46	207.84
2nd Resistance	195.69	203.99
Stop Loss for 1st Resistance	193.92	200.14
1st Resistance	192.14	196.29
Relative Starting Point	188.60	188.60
1st Support	185.06	180.91
Stop Loss for 1st Support	183.28	177.06
2nd Support	181.51	173.21
Stop Loss for 2nd Support	179.74	169.36



TESLA

MA – Short	MA - Long	DMI	ADX	RSI	Bollinger Bands
Bearish	Neutral	Neutral	Trending	Neutral	Lower Extreme

	DAILY:	WEEKLY:	
Technical Overview	Consolidation - Volatile	Cautious Consolidation	92%
Technical Overview	Buy 1st Resistance upon breakout from below; Sell 1st Support upon breakout from above	Sell 1st Resistance only after a significant reversal; Buy 1st Support only after a significant Reversal	87%
Technical Overview	Sell 1st Resistance only after a reversal; Buy 1st Support only after a reversal	Buy 1st Resistance upon breakout from below; Sell 1st Support upon breakout from above	82%
Stop Loss for 2nd Resistance	463.76	492.77	77%
2nd Resistance	458.91	482.12	
Stop Loss for 1st Resistance	454.06	471.47	72%
1st Resistance	449.22	460.82	
Relative Starting Point	439.52	439.52	67%
1st Support	429.82	418.22	62%
Stop Loss for 1st Support	424.98	407.57	
2nd Support	420.13	396.92	
Stop Loss for 2nd Support	415.28	386.27	

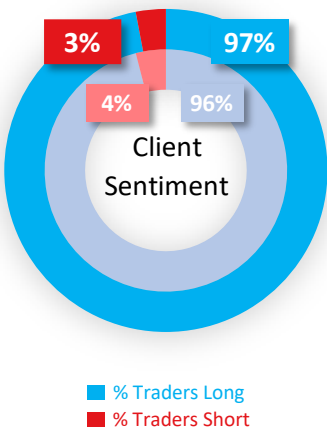
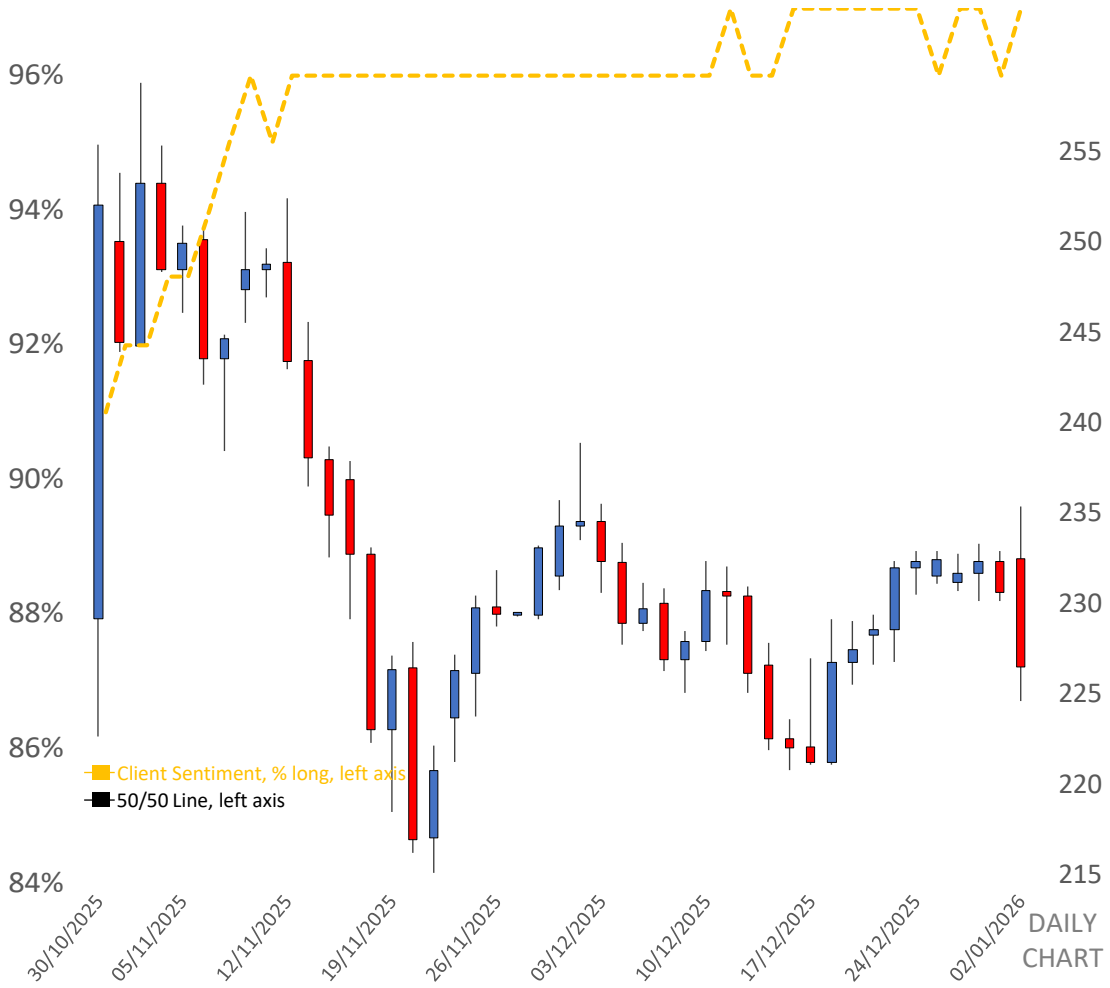




# AMAZON

MA – Short	MA - Long	DMI	ADX	RSI	Bollinger Bands
Bearish	Neutral	Neutral	Consolidation	Neutral	Neutral

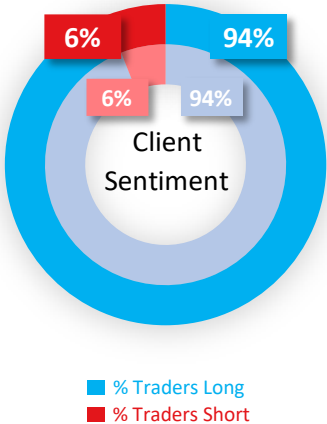
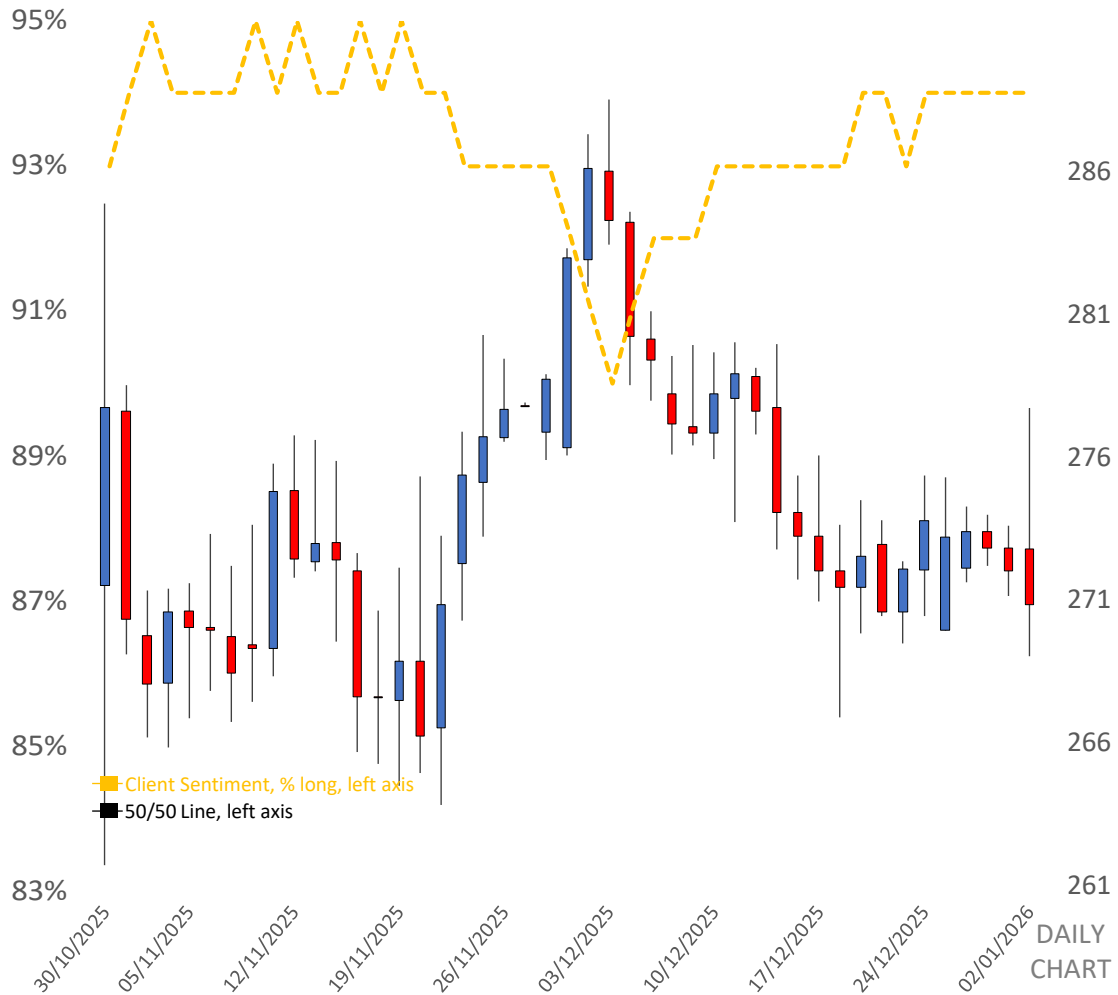
	DAILY: Cautious Consolidation	WEEKLY: Cautious Consolidation
Technical Overview		
Technical Overview Conformist Strategies	Sell 1st Resistance only after a significant reversal; Buy 1st Support only after a significant Reversal	Sell 1st Resistance only after a significant reversal; Buy 1st Support only after a significant Reversal
Technical Overview Contrarian Strategies	Buy 1st Resistance upon breakout from below; Sell 1st Support upon breakout from above	Buy 1st Resistance upon breakout from below; Sell 1st Support upon breakout from above
Stop Loss for 2nd Resistance	233.57	245.45
2nd Resistance	232.16	241.66
Stop Loss for 1st Resistance	230.75	237.88
1st Resistance	229.33	234.09
Relative Starting Point	226.51	226.51
1st Support	223.69	218.93
Stop Loss for 1st Support	222.27	215.14
2nd Support	220.86	211.36
Stop Loss for 2nd Support	219.45	207.57



# APPLE

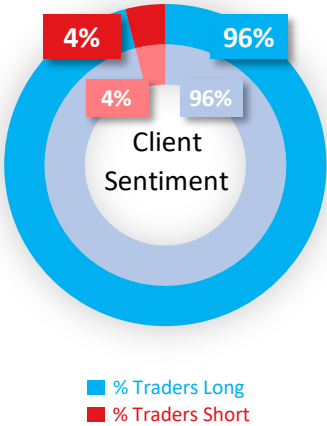
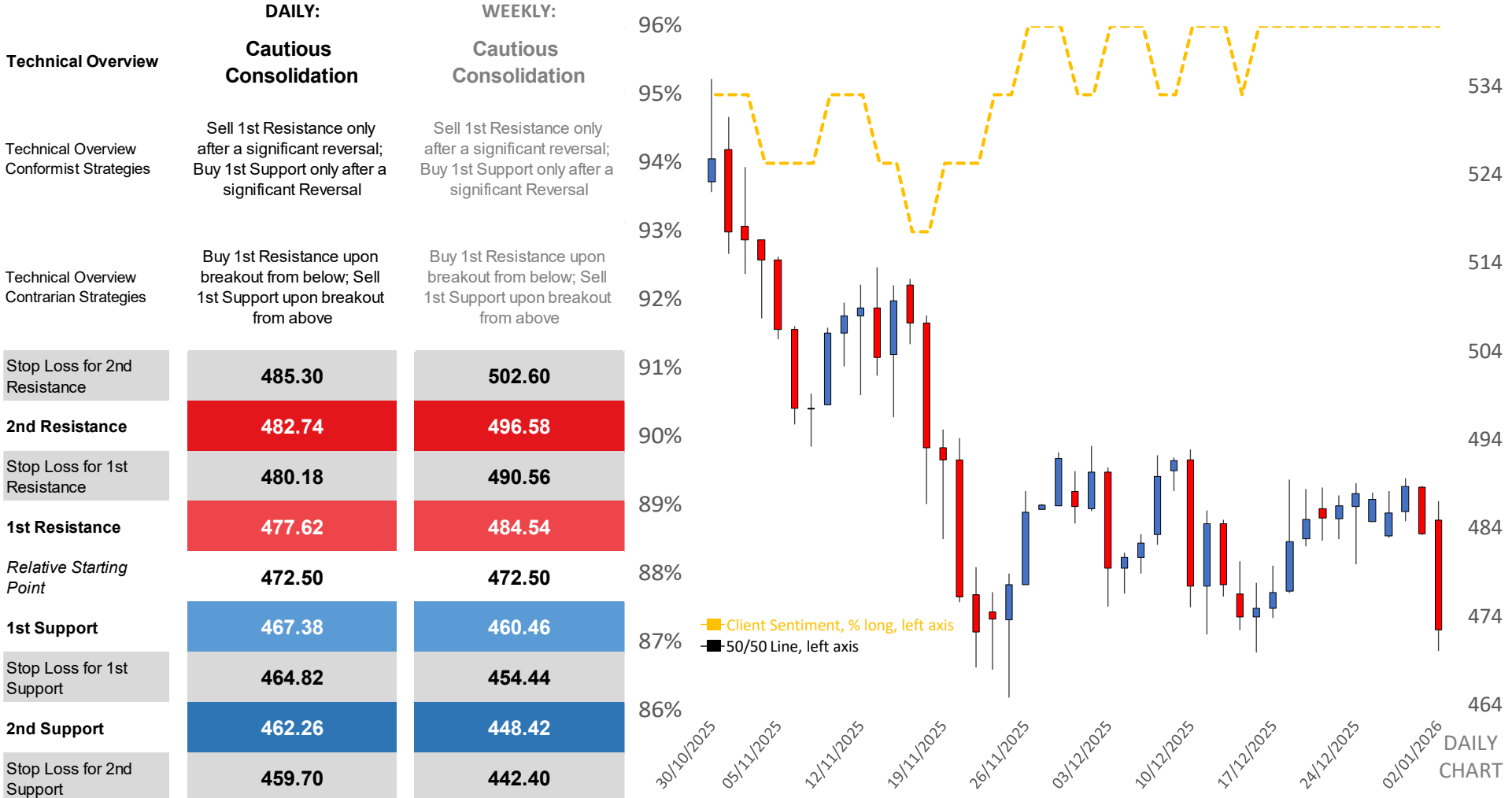
MA – Short	MA - Long	DMI	ADX	RSI	Bollinger Bands
Bearish	Neutral	Neutral	Consolidation	Neutral	Lower Extreme

Technical Overview	DAILY: Cautious Consolidation	WEEKLY: Bull Average
Technical Overview Conformist Strategies	Sell 1st Resistance only after a significant reversal; Buy 1st Support only after a significant Reversal	Buy 1st Support only after a significant reversal; Buy 1st Resistance upon breakout from below
Technical Overview Contrarian Strategies	Buy 1st Resistance upon breakout from below; Sell 1st Support upon breakout from above	Sell 1st Resistance level only after a reversal; Sell 1st Support upon breakout from above
Stop Loss for 2nd Resistance	278.02	287.54
2nd Resistance	276.59	284.20
Stop Loss for 1st Resistance	275.15	280.86
1st Resistance	273.72	277.53
Relative Starting Point	270.85	270.85
1st Support	267.98	264.17
Stop Loss for 1st Support	266.55	260.84
2nd Support	265.11	257.50
Stop Loss for 2nd Support	263.68	254.16



# MICROSOFT

MA – Short	MA - Long	DMI	ADX	RSI	Bollinger Bands
Bearish	Bearish	Negative	Trending	Neutral	Lower Extreme



# EUR/USD

MA – Short	MA - Long	DMI	ADX	RSI	Bollinger Bands
Bearish	Bullish	Neutral	Trending	Neutral	Neutral

DAILY:

WEEKLY:

## Technical Overview

### Bull Average

### Bull Trend - Stalling

Technical Overview  
Conformist Strategies

Buy 1st Support only after a significant reversal; Buy 1st Resistance upon breakout from below

Buy 1st Support only after a reversal; Buy 1st Resistance upon breakout from below

Technical Overview  
Contrarian Strategies

Sell 1st Resistance level only after a reversal; Sell 1st Support upon breakout from above

Sell 1st Resistance At/Before Price, Sell 1st Support Upon Breakout From Above

Stop Loss for 2nd Resistance

1.1779

1.1951

2nd Resistance

1.1767

1.1905

Stop Loss for 1st Resistance

1.1755

1.1858

1st Resistance

1.1743

1.1812

Relative Starting Point

1.1719

1.1719

1st Support

1.1696

1.1627

Stop Loss for 1st Support

1.1684

1.1580

2nd Support

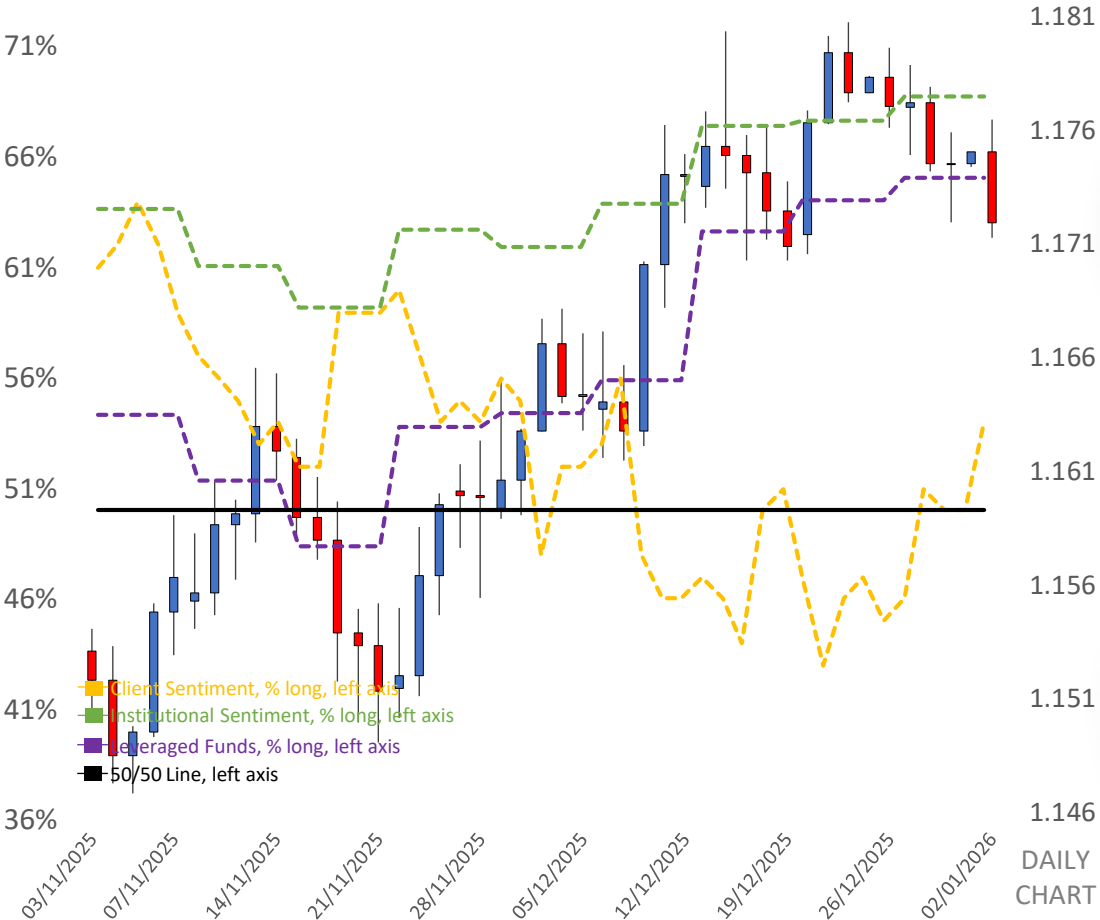
1.1672

1.1534

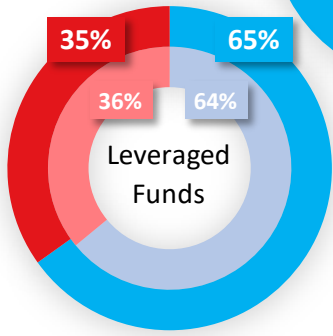
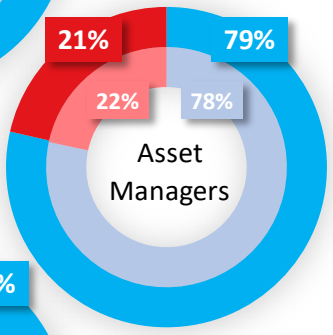
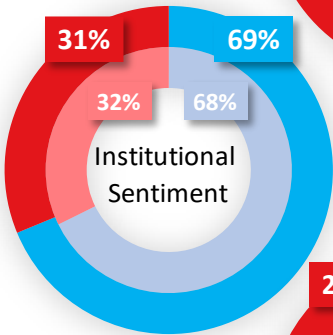
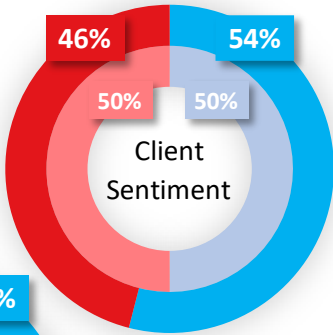
Stop Loss for 2nd Support

1.1660

1.1488



■ % Traders Long  
■ % Traders Short



5 January 2026

CFDs trading carries risk. Capital.com is regulated by the Securities and Commodities Authority.

DAILY MARKET REPORT

capital.com

# GBP/USD

MA – Short	MA - Long	DMI	ADX	RSI	Bollinger Bands
Neutral	Bullish	Neutral	Trending	Neutral	Neutral

DAILY:

WEEKLY:

Technical Overview

Bull Average

Cautious Consolidation

Technical Overview  
Conformist Strategies

Buy 1st Support only after a significant reversal; Buy 1st Resistance upon breakout from below

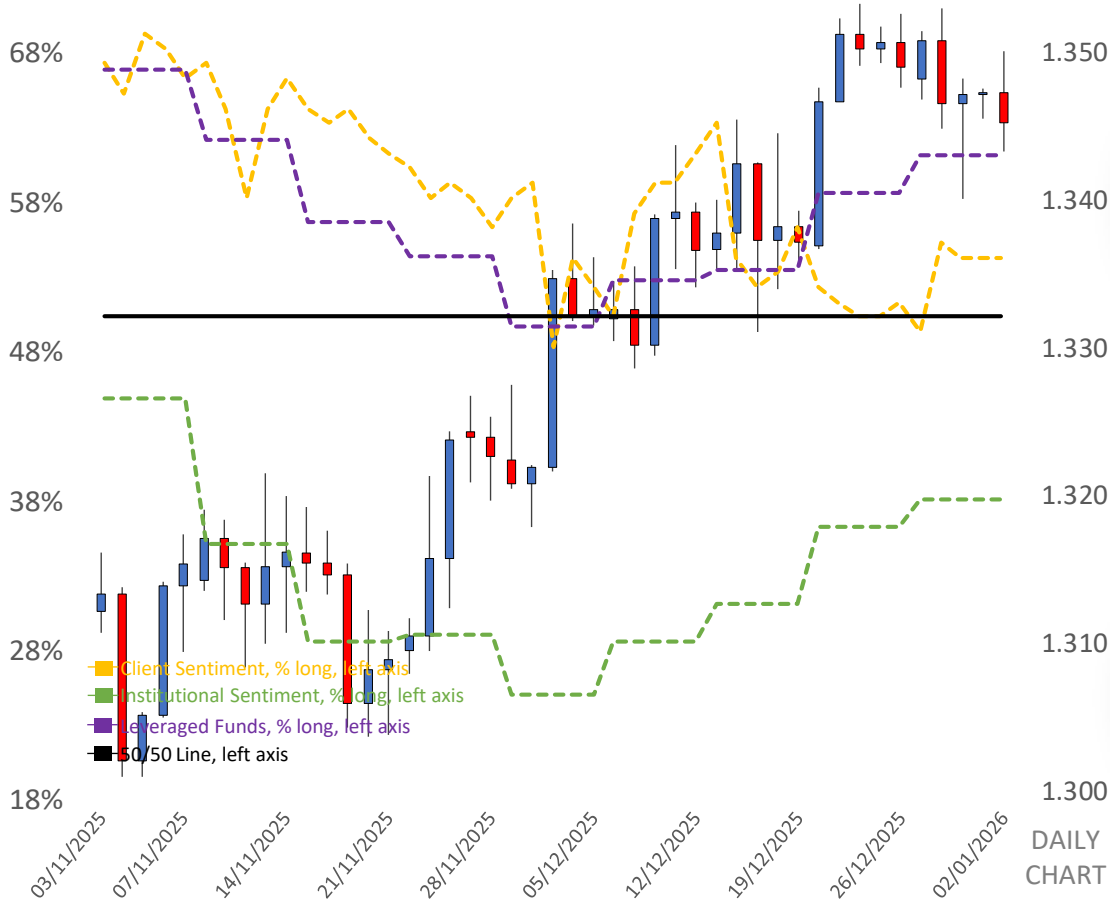
Sell 1st Resistance only after a significant reversal; Buy 1st Support only after a significant Reversal

Technical Overview  
Contrarian Strategies

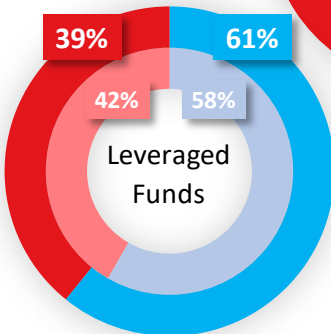
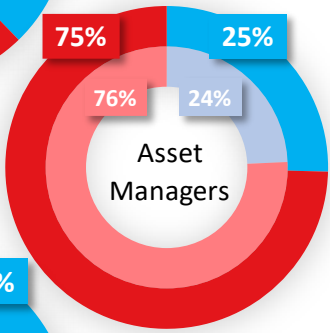
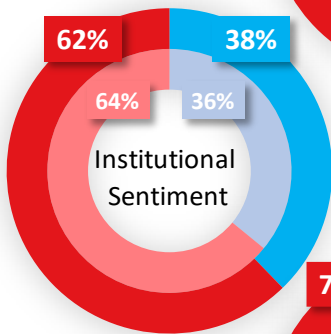
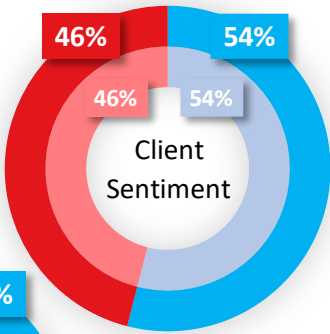
Sell 1st Resistance level only after a reversal; Sell 1st Support upon breakout from above

Buy 1st Resistance upon breakout from below; Sell 1st Support upon breakout from above

Stop Loss for 2nd Resistance	1.3546	1.3739
2nd Resistance	1.3527	1.3682
Stop Loss for 1st Resistance	1.3509	1.3625
1st Resistance	1.3490	1.3567
Relative Starting Point	1.3453	1.3453
1st Support	1.3416	1.3338
Stop Loss for 1st Support	1.3397	1.3281
2nd Support	1.3379	1.3224
Stop Loss for 2nd Support	1.3360	1.3167



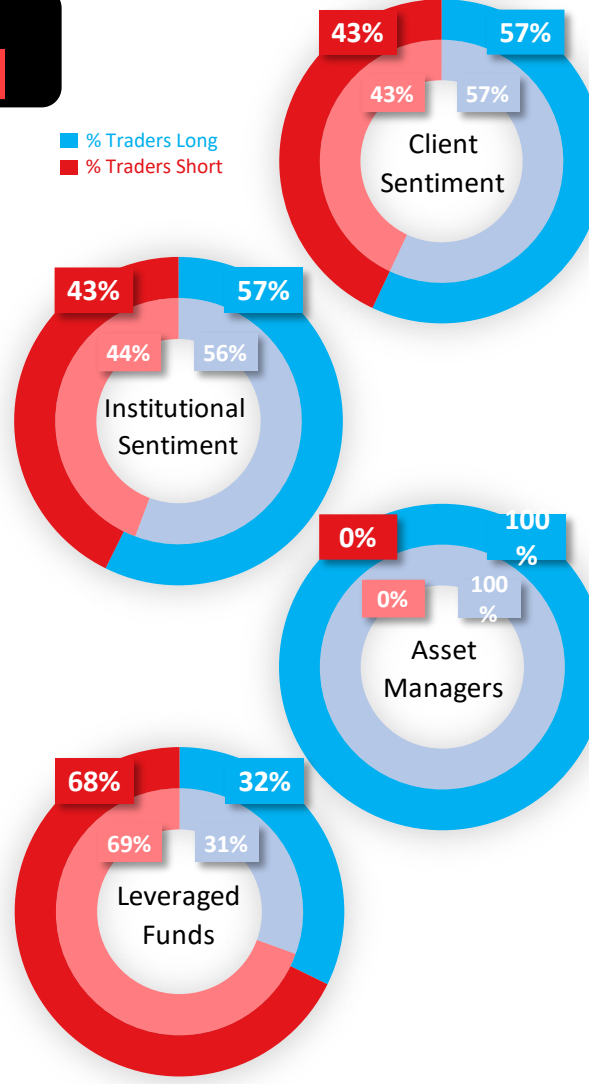
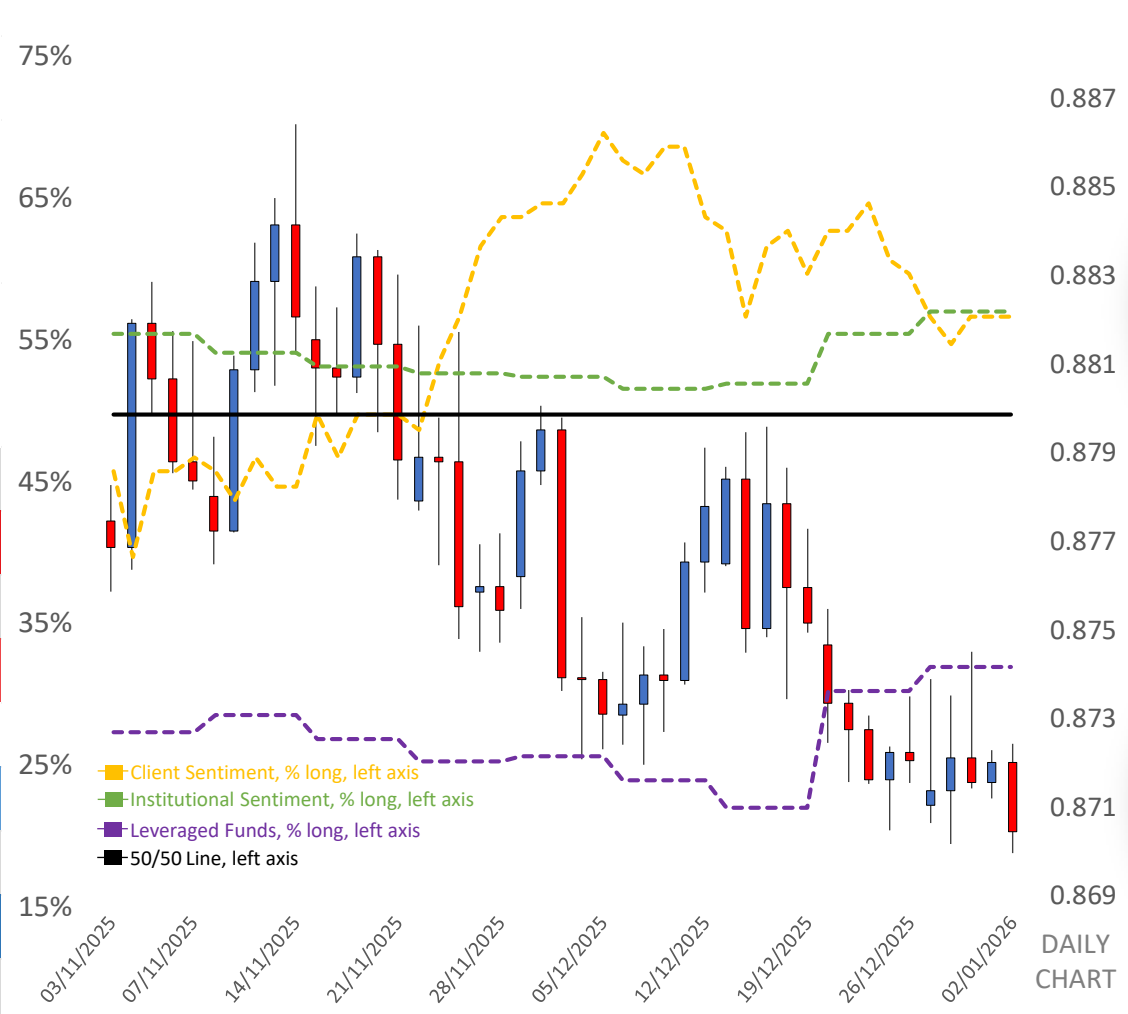
% Traders Long  
% Traders Short



# EUR/GBP

MA – Short	MA - Long	DMI	ADX	RSI	Bollinger Bands
Bearish	Neutral	Neutral	Consolidation	Neutral	Lower Extreme

	DAILY:	WEEKLY:
Technical Overview	<b>Cautious Consolidation</b>	<b>Cautious Consolidation</b>
Technical Overview Conformist Strategies	Sell 1st Resistance only after a significant reversal; Buy 1st Support only after a significant Reversal	Sell 1st Resistance only after a significant reversal; Buy 1st Support only after a significant Reversal
Technical Overview Contrarian Strategies	Buy 1st Resistance upon breakout from below; Sell 1st Support upon breakout from above	Buy 1st Resistance upon breakout from below; Sell 1st Support upon breakout from above
Stop Loss for 2nd Resistance	0.8751	0.8820
2nd Resistance	0.8742	0.8797
Stop Loss for 1st Resistance	0.8732	0.8774
1st Resistance	0.8723	0.8751
Relative Starting Point	0.8705	0.8705
1st Support	0.8686	0.8659
Stop Loss for 1st Support	0.8677	0.8636
2nd Support	0.8668	0.8613
Stop Loss for 2nd Support	0.8658	0.8590



USD/JPY

MA – Short

Bullish

MA - Long

Bullish

DMI

Neutral

ADX

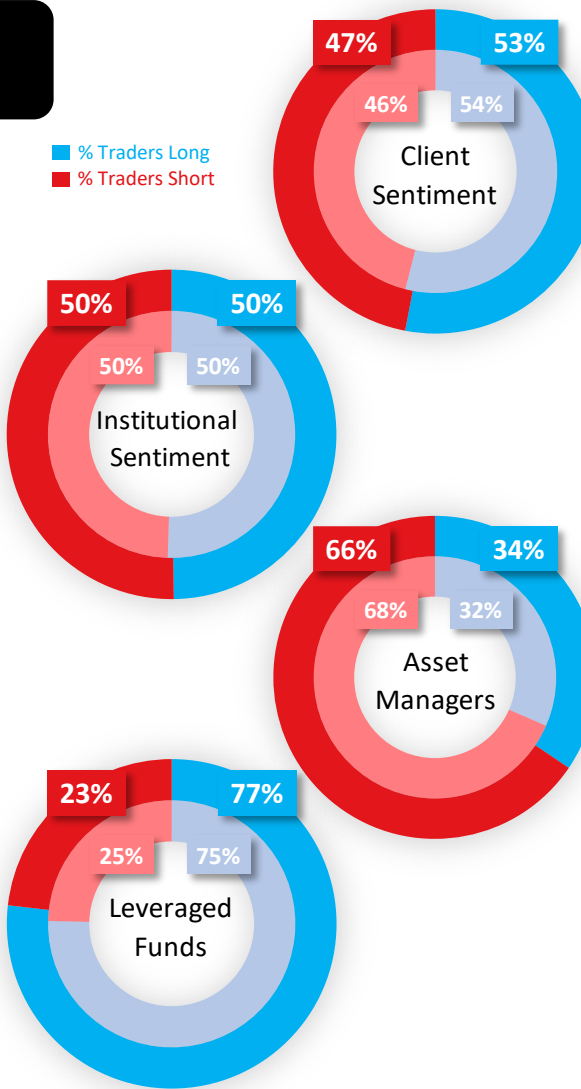
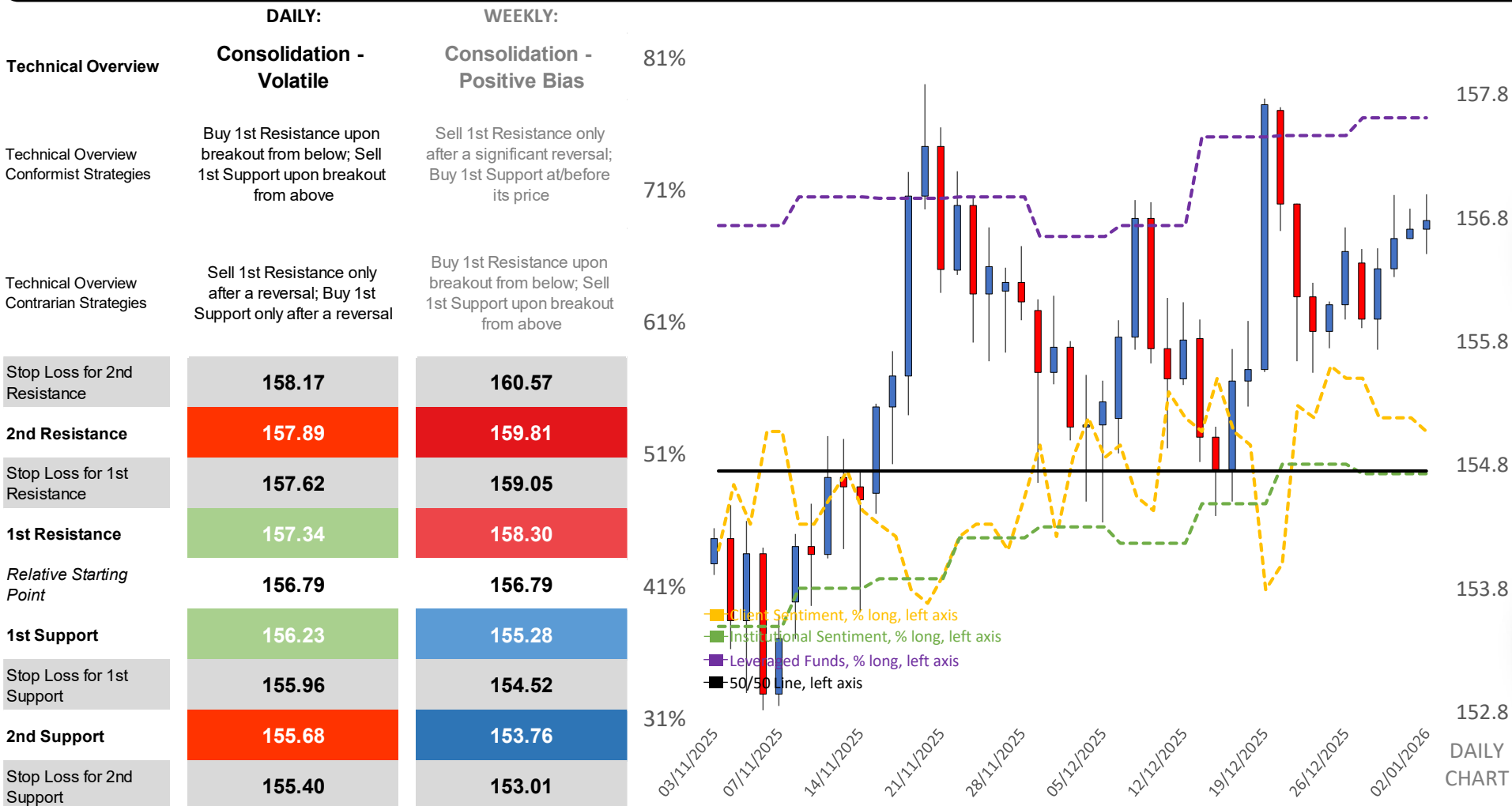
Consolidation

RSI

Neutral

Bollinger Bands

Neutral





# AUD/USD

MA – Short	MA - Long	DMI	ADX	RSI	Bollinger Bands
Bullish	Bullish	Positive	Trending	Neutral	Neutral

DAILY:

WEEKLY:

## Technical Overview

### Bull Average

Technical Overview  
Conformist Strategies

Technical Overview  
Contrarian Strategies

Stop Loss for 2nd  
Resistance

2nd Resistance

Stop Loss for 1st  
Resistance

1st Resistance

Relative Starting  
Point

1st Support

Stop Loss for 1st  
Support

2nd Support

Stop Loss for 2nd  
Support

Buy 1st Support only after a  
significant reversal; Buy 1st  
Resistance upon breakout  
from below

Sell 1st Resistance level  
only after a reversal; Sell 1st  
Support upon breakout from  
above

### Consolidation - Positive Bias

Sell 1st Resistance only  
after a significant reversal;  
Buy 1st Support at/before  
its price

Buy 1st Resistance upon  
breakout from below; Sell  
1st Support upon breakout  
from above

79%

69%

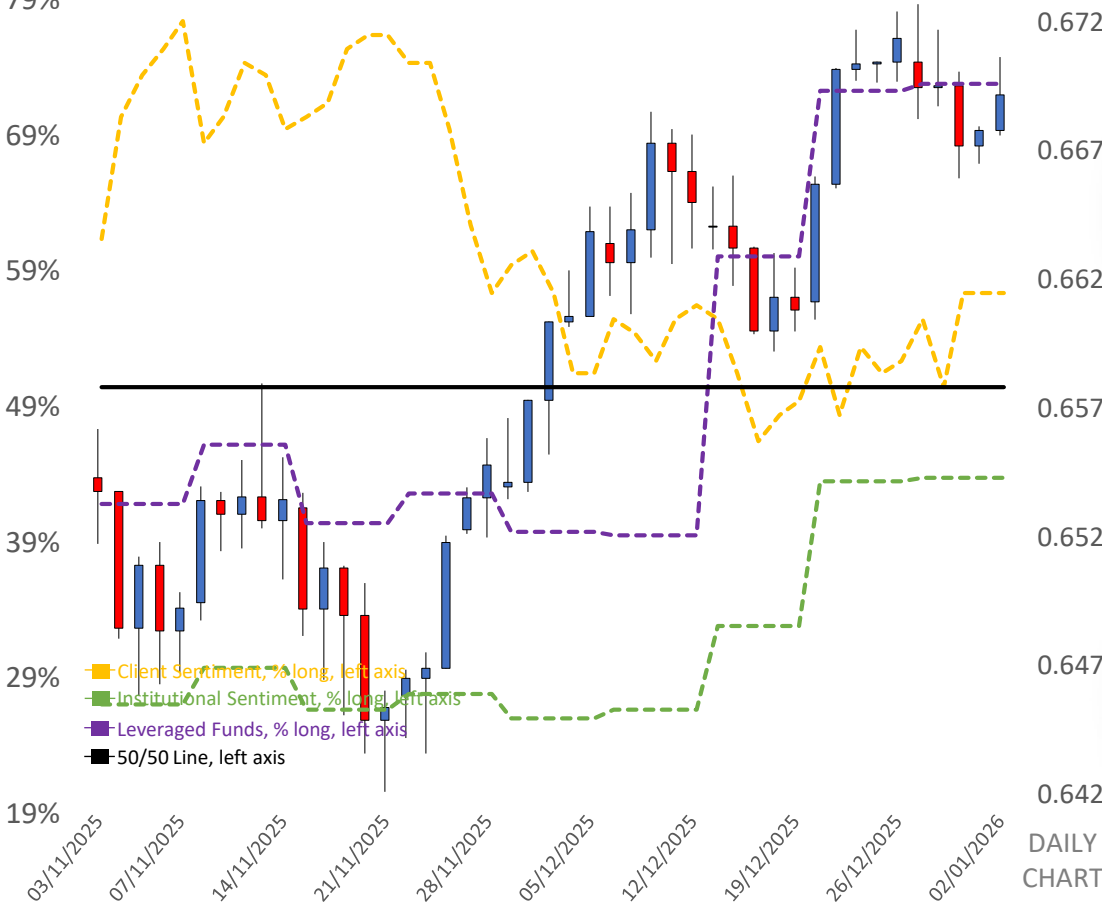
59%

49%

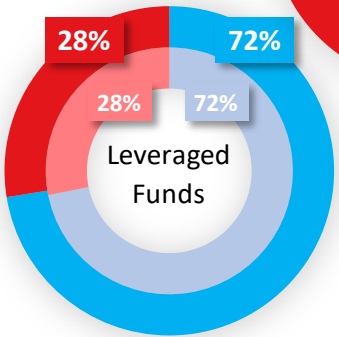
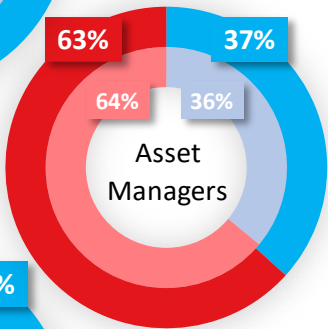
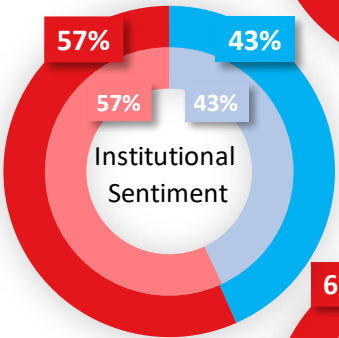
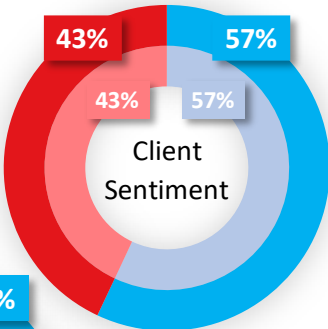
39%

29%

19%



■ % Traders Long  
■ % Traders Short





# USD/CAD

MA – Short	MA - Long	DMI	ADX	RSI	Bollinger Bands
Neutral	Bearish	Neutral	Trending	Oversold	Neutral

DAILY:

WEEKLY:

Technical Overview

**Bear Average**

Technical Overview  
Conformist Strategies

Technical Overview  
Contrarian Strategies

Sell 1st Resistance level only after a significant reversal; Sell 1st Support upon breakout from above

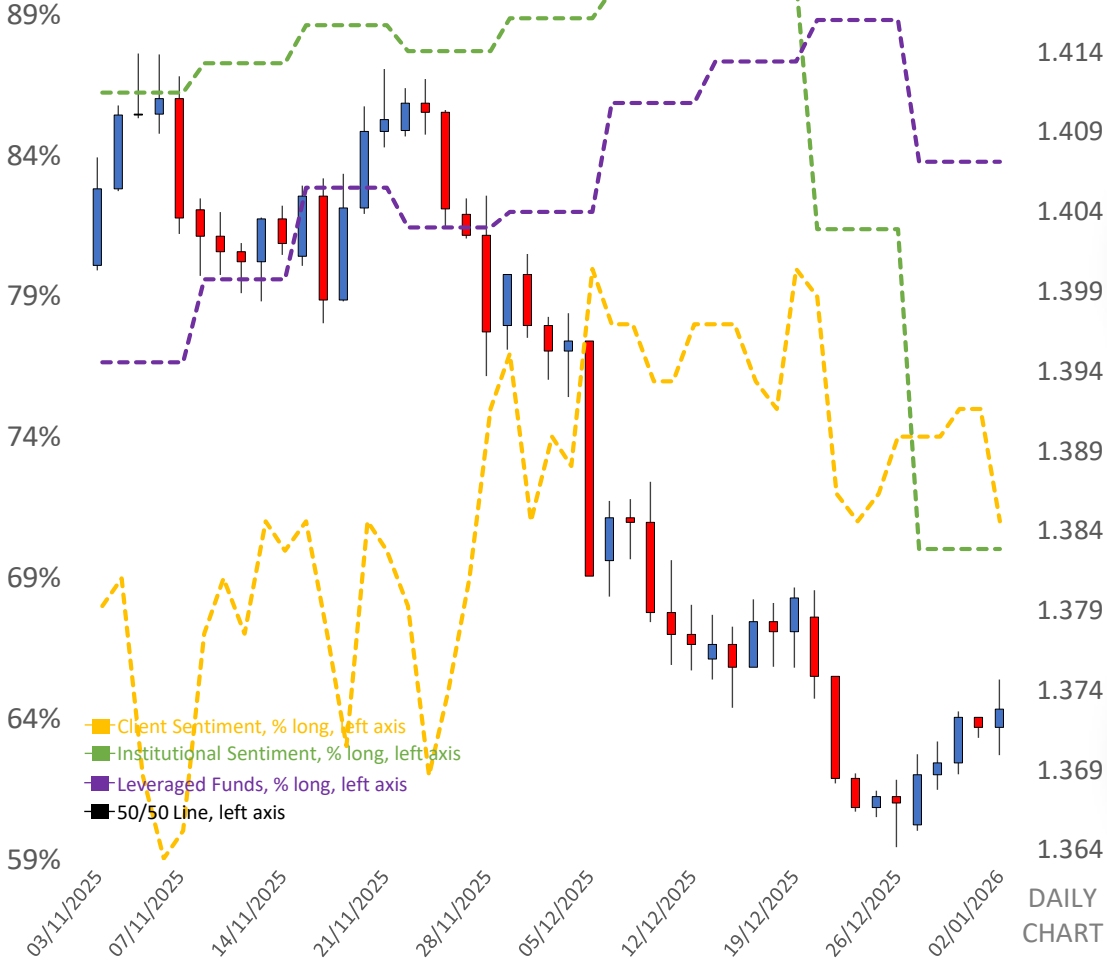
Buy 1st Support only after a reversal; Buy 1st Resistance upon breakout from below

**Consolidation - Negative Bias**

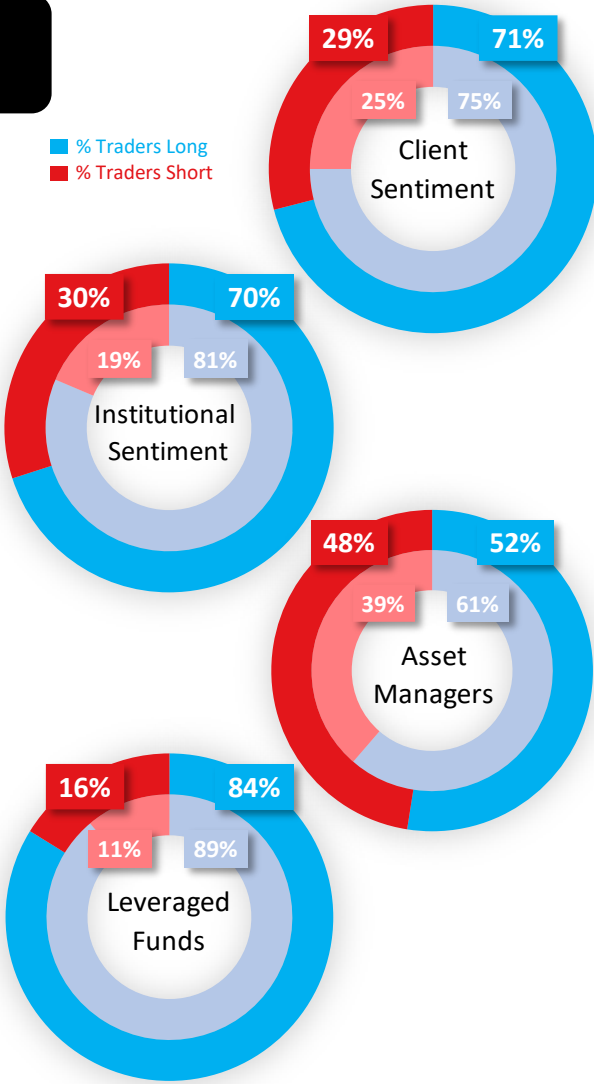
Sell 1st Resistance at/before its price; Buy 1st Support only after a significant reversal

Buy 1st Resistance upon breakout from below; Sell 1st Support upon breakout from above

Stop Loss for 2nd Resistance	1.3794	1.3926
2nd Resistance	1.3781	1.3887
Stop Loss for 1st Resistance	1.3768	1.3847
1st Resistance	1.3755	1.3808
Relative Starting Point	1.3729	1.3729
1st Support	1.3702	1.3650
Stop Loss for 1st Support	1.3689	1.3610
2nd Support	1.3676	1.3571
Stop Loss for 2nd Support	1.3663	1.3531



■ % Traders Long  
■ % Traders Short



# USD/CHF

MA – Short	MA - Long	DMI	ADX	RSI	Bollinger Bands
Neutral	Bearish	Neutral	Consolidation	Neutral	Neutral

DAILY:

WEEKLY:

Technical Overview

Bear Average

Bear Average

Technical Overview  
Conformist Strategies

Technical Overview  
Contrarian Strategies

Stop Loss for 2nd  
Resistance

2nd Resistance

Stop Loss for 1st  
Resistance

1st Resistance

Relative Starting  
Point

1st Support

Stop Loss for 1st  
Support

2nd Support

Stop Loss for 2nd  
Support

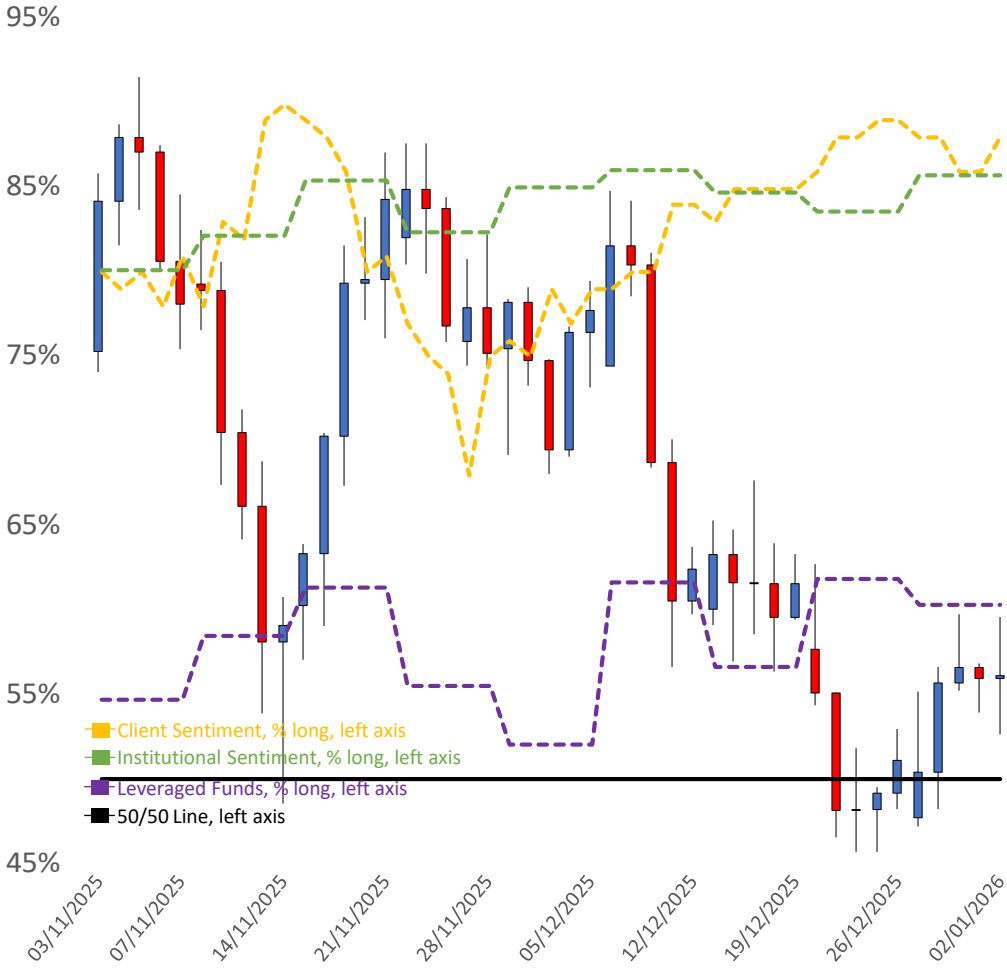
Sell 1st Resistance level  
only after a significant  
reversal; Sell 1st Support  
upon breakout from above

Buy 1st Support only after a  
reversal; Buy 1st  
Resistance upon breakout  
from below

Sell 1st Resistance level  
only after a significant  
reversal; Sell 1st Support  
upon breakout from above

Buy 1st Support only after a  
reversal; Buy 1st  
Resistance upon breakout  
from below

0.7972	0.8101
0.7962	0.8065
0.7952	0.8029
0.7941	0.7993
0.7921	0.7921
0.7900	0.7849
0.7890	0.7812
0.7880	0.7776
0.7870	0.7740



% Traders Long  
% Traders Short

0.811

0.806

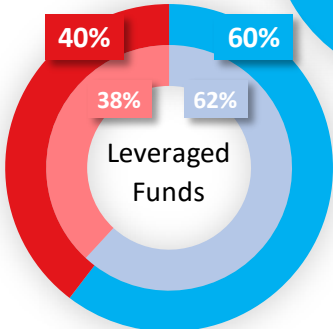
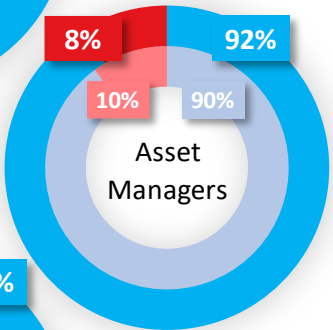
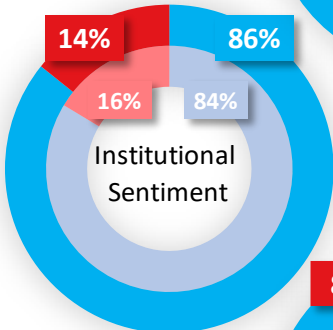
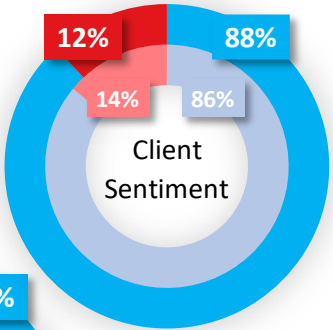
0.801

0.796

0.791

0.786

DAILY  
CHART



# GBP/JPY

MA – Short	MA - Long	DMI	ADX	RSI	Bollinger Bands
Bullish	Bullish	Positive	Trending	Neutral	Neutral

DAILY:

WEEKLY:

Technical Overview

Bull Average

Bull Average

66%

Technical Overview  
Conformist Strategies

Buy 1st Support only after a significant reversal; Buy 1st Resistance upon breakout from below

Buy 1st Support only after a significant reversal; Buy 1st Resistance upon breakout from below

Technical Overview  
Contrarian Strategies

Sell 1st Resistance level only after a reversal; Sell 1st Support upon breakout from above

Sell 1st Resistance level only after a reversal; Sell 1st Support upon breakout from above

Stop Loss for 2nd Resistance

212.57

215.02

46%

2nd Resistance

212.26

214.22

41%

Stop Loss for 1st Resistance

211.95

213.42

36%

1st Resistance

211.64

212.62

31%

Relative Starting Point

211.02

211.02

26%

1st Support

210.40

209.42

21%

Stop Loss for 1st Support

210.09

208.62

2nd Support

209.78

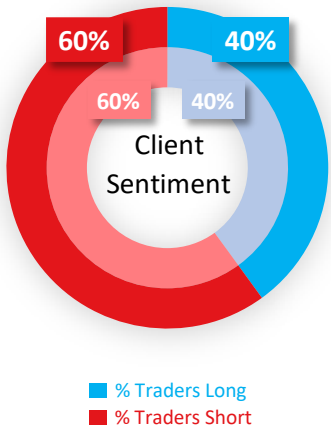
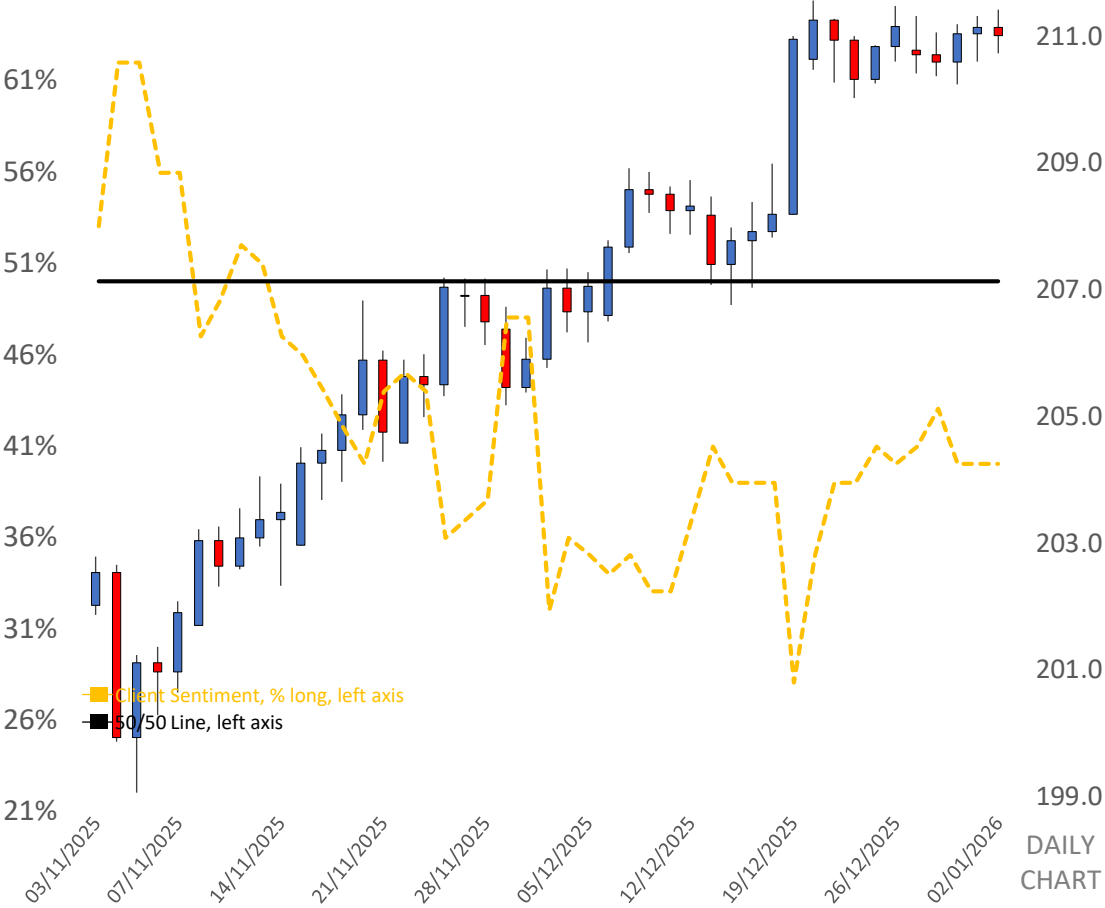
207.82

Stop Loss for 2nd Support

209.47

207.02

19%



# BITCOIN

MA – Short	MA - Long	DMI	ADX	RSI	Bollinger Bands
Bullish	Neutral	Positive	Consolidation	Neutral	Upper Extreme

DAILY:

WEEKLY:

Technical Overview

**Consolidation - Volatile**

Technical Overview  
Conformist Strategies

Technical Overview  
Contrarian Strategies

Stop Loss for 2nd  
Resistance

2nd Resistance

Stop Loss for 1st  
Resistance

1st Resistance

Relative Starting  
Point

1st Support

Stop Loss for 1st  
Support

2nd Support

Stop Loss for 2nd  
Support

Buy 1st Resistance upon  
breakout from below; Sell  
1st Support upon breakout  
from above

Sell 1st Resistance only  
after a reversal; Buy 1st  
Support only after a reversal

95346

94571

93796

93021

91471

89921

89146

88371

87596

Buy 1st Resistance upon  
breakout from below; Sell  
1st Support upon breakout  
from above

Sell 1st Resistance only  
after a significant reversal;  
Buy 1st Support only after a  
significant Reversal

103339

100786

98232

95678

90571

85464

82910

80357

77803

93%

83%

73%

63%

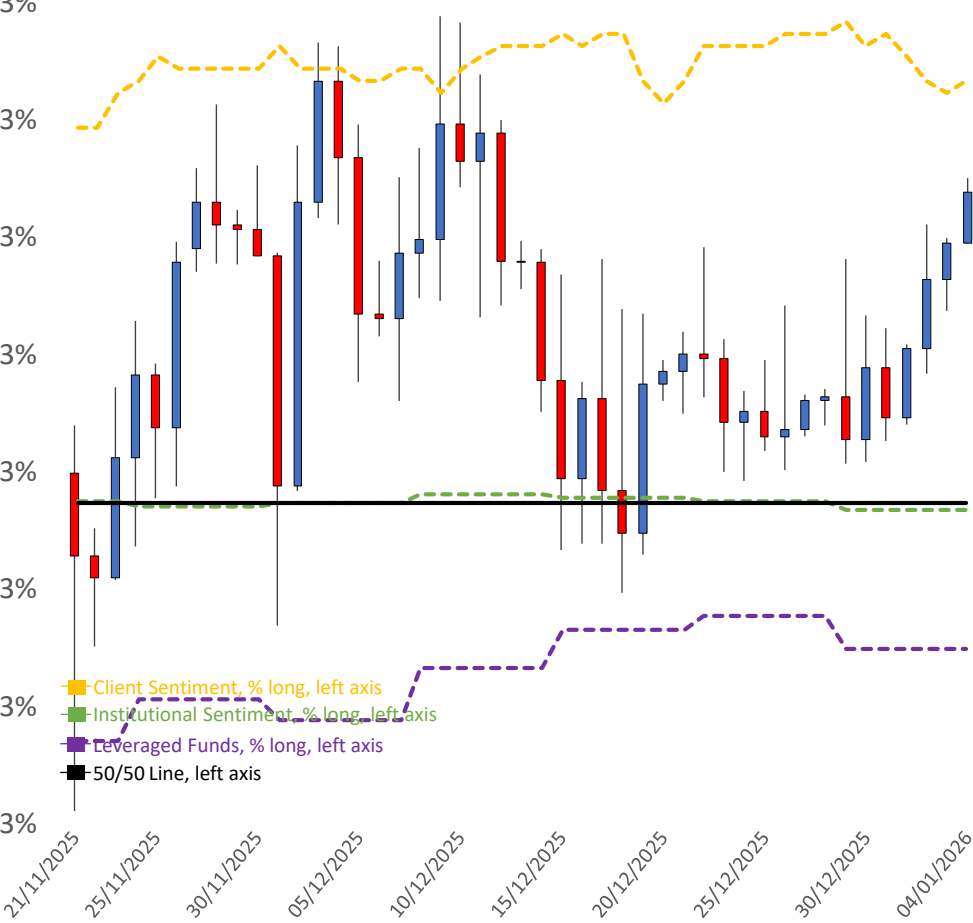
53%

43%

33%

23%

Client Sentiment, % long, left axis  
Institutional Sentiment, % long, left axis  
Leveraged Funds, % long, left axis  
50/50 Line, left axis



94520

92520

90520

88520

86520

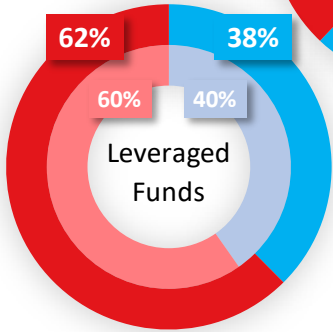
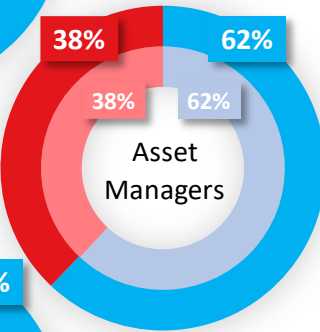
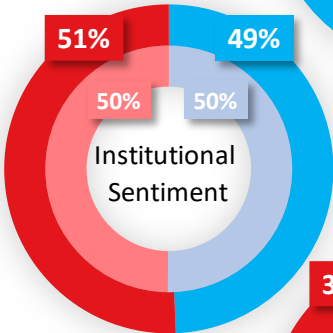
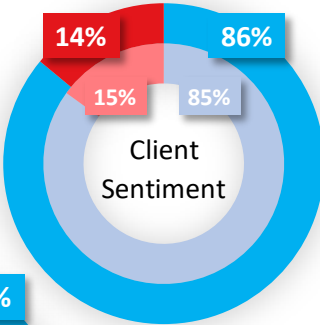
84520

82520

80520

DAILY  
CHART

% Traders Long  
% Traders Short



# ETHER

MA – Short

Bullish

MA - Long

Neutral

DMI

Positive

ADX

Consolidation

RSI

Neutral

Bollinger Bands

Upper Extreme

DAILY:

WEEKLY:

Technical Overview

**Consolidation - Volatile**

Technical Overview  
Conformist Strategies

Buy 1st Resistance upon  
breakout from below; Sell  
1st Support upon breakout  
from above

Technical Overview  
Contrarian Strategies

Sell 1st Resistance only  
after a reversal; Buy 1st  
Support only after a reversal

Stop Loss for 2nd  
Resistance

**3327.9**

2nd Resistance

**3290.7**

Stop Loss for 1st  
Resistance

**3253.6**

1st Resistance

**3216.5**

Relative Starting  
Point

**3142.2**

1st Support

**3068.0**

Stop Loss for 1st  
Support

**3030.8**

2nd Support

**2993.7**

Stop Loss for 2nd  
Support

**2956.6**

**Volatile**

Buy 1st Resistance upon  
breakout from below; Sell  
1st Support upon breakout  
from above

Sell 1st Resistance only  
after a significant reversal;  
Buy 1st Support only after a  
significant Reversal

**3926.7**

**3766.2**

**3605.8**

**3445.3**

**3124.4**

**2803.5**

**2643.1**

**2482.6**

**2322.2**

92%

82%

72%

62%

52%

42%

32%

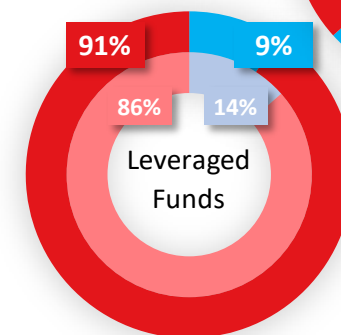
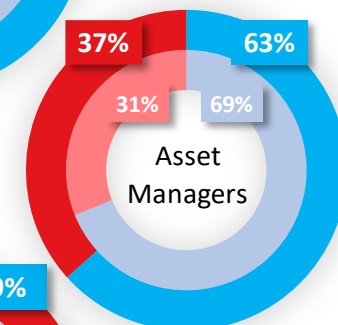
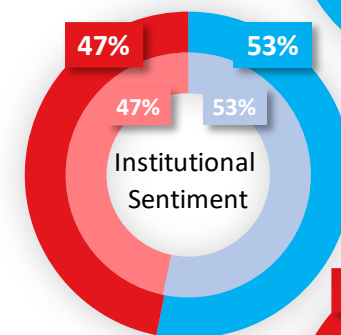
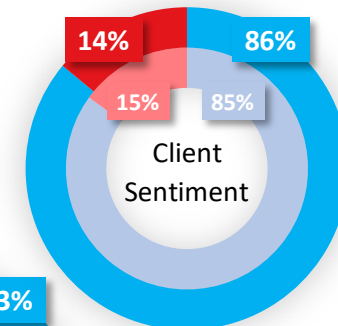
22%

12%

2%



■ % Traders Long  
■ % Traders Short



# GUIDE

DAILY:

WEEKLY:

MA - Short

MA - Long

DMI

ADX

RSI

Bollinger Bands

Neutral

Bullish

Positive

Trending

Neutral

Neutral

Technical boxes are for the daily time frame

## Technical Overview

### Bear Average

Sell 1st Resistance level only after a significant reversal; Sell 1st Support upon breakout from above

Buy 1st Support only after a reversal; Buy 1st Resistance upon breakout from below

Technical Overview Conformist Strategies

Technical Overview Contrarian Strategies

Stop Loss for 2nd Resistance

1.0871

2nd Resistance

1.0854

Stop Loss for 1st Resistance

1.0837

1st Resistance

1.0820

Relative Starting Point

1.0786

1st Support

1.0751

Stop Loss for 1st Support

1.0734

2nd Support

1.0717

2nd Support

1.0700

### Cautious Consolidation

Sell 1st Resistance at/before its price; Buy 1st Support only after a significant reversal

Buy 1st Resistance upon breakout from below; Sell 1st Support upon breakout from above

Current technical overview is based on an aggregate calculation of the product's technicals, though is less relevant on days that involve significant fundamental data or central bank monetary policy decisions

Strategies that complement the current technical overview, though note whether to initiate the trade after a reversal, a significant reversal, fading the move, or going for a breakout in favor of the trend if it presents itself

In the event of a technical overview failure – be it due to a day with significant fundamental movement or shift in technicals – the strategies are designed to help the trader navigate a shift with greater ease, especially for those willing to take a contrarian view of the current technical overview

The 1<sup>st</sup> Resistance is the first line of defense for intraday trading, though in a bullish technical state could be traded with a buy breakout strategy. The 2<sup>nd</sup> Resistance is the second line of defense that is more rarely breached, with the S/L being the stop losses for both resistance levels in the event a trader decides to initiate sell strategies

The 1<sup>st</sup> Support is the first line of defense in the event of a price drop, but in a bearish technical overview sell breakout strategies to the downside can be entertained in the event of significant follow-through in price. The stop loss (S/L) for both 1<sup>st</sup> and 2<sup>nd</sup> Support are in the event buy strategies have been initiated

Measurement between DI- and DI+, should be used in conjunction with ADX to determine both trend strength and direction

Used to determine strength of a trend, "Trending" showing potential and "Consolidation" the lack thereof

Momentum based indicator measuring speed and change of directional price movements, either "Oversold", "Overbought", or "Neutral"

Price relative to the Bollinger bands, be it at the "Upper Extreme", "Lower Extreme", or "Neutral"

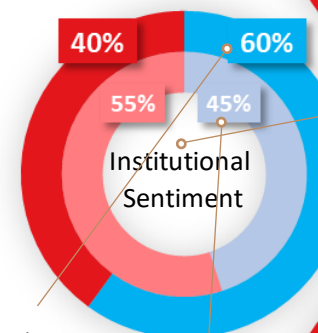
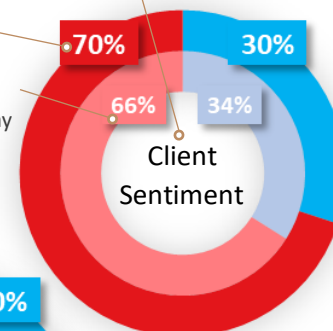
Click to go back to the home page, and clicking on the tabs there will take you to your market

Click here to go back to **HOMEPAGE**

Percentage of clients short as of today  
Percentage of clients short as of previous trading day

Client sentiment

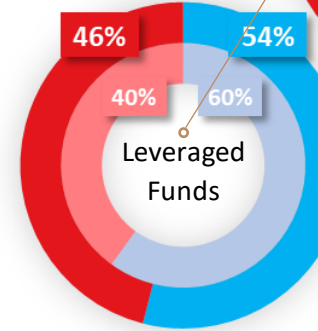
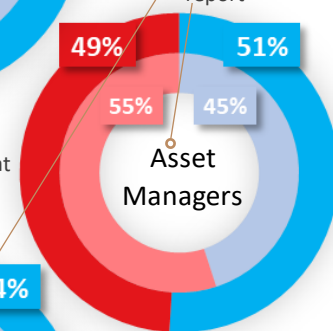
% Traders Long  
% Traders Short



Based on speculative positioning of hedge funds, other major financial institutions, and large traders, from the CFTC's CoT report

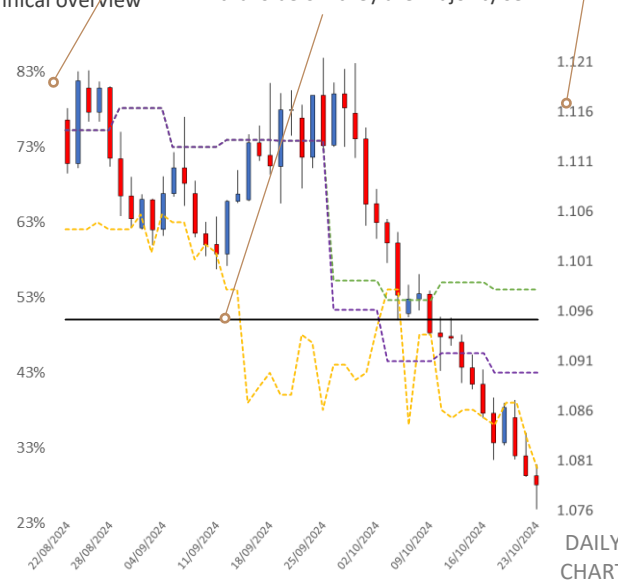
Percentage of net speculative lots that are long as of last Tuesday

Percentage of net speculative lots that are long as of the Tuesday before



Sentiment mapped onto the chart, corresponds to the left axis, as % long. Example: Client sentiment's dotted line is at 62% two months ago, means at that point in time they were majority buy 62% and 38% were a minority sell

50/50 line: whenever a specific dotted line is above it means majority buy, when it falls below they are majority sell



CFDs trading carries risk. Capital.com is regulated by the Securities and Commodities Authority.

**DAILY MARKET REPORT**

**capital.com**



## DISCLAIMER

**Over-the-Counter leveraged derivative contracts, including contracts for difference and spot foreign exchange products are complex financial instruments and carries a high degree of risk of losing money rapidly due to leverage. Trading Over-the-Counter leveraged derivatives may not be suitable for all investors. Before engaging in any trading activities, you should carefully consider your investment objectives, risk tolerance, and financial situation. Please seek independent financial advice before trading if necessary.**

CAPITAL COM MENA SECURITIES TRADING L.L.C is a limited liability company with company number 1994695. CAPITAL COM MENA SECURITIES TRADING L.L.C is a Company registered in Dubai, United Arab Emirates, and authorised by the Securities and Commodities Authority with license number 20200000176. The Company's registered office is at Jumeirah Emirates Towers, Emirates Towers Offices, Level L14, Unit 14C, Dubai, UAE. CAPITAL COM MENA SECURITIES TRADING L.L.C is an execution only service provider and does not provide investment advice. CAPITAL COM MENA SECURITIES TRADING L.L.C may publish general market commentary from time to time. Where it does, the material published does not constitute advice, or a solicitation, or a recommendation to a transaction in any financial instrument. CAPITAL COM MENA SECURITIES TRADING L.L.C accepts no responsibility for any use of the content presented and any consequences of that use. No representation or warranty is given as to the completeness of this information. Anyone acting on the information provided does so at their own risk. The information contained herein is not intended for distribution to residents in any country where such distribution or use would contravene any local law or regulatory requirement. Our products and services are not available to embargoed or sanctioned countries. The information is not intended for distribution to, or use by, any person in any country or jurisdiction where such distribution or use would be contrary to local law or regulation.

Address: Jumeirah Emirates Towers, Emirates Towers  
Offices, Level L14, Unit 14C, Dubai, UAE

[capital.com/ae](https://capital.com/ae)

[support@capital.com](mailto:support@capital.com)  
+97145768641

**capital.com**